



FRAMELESS SHOWER DOOR

HARDWARE AND SUPPLIES



See Page 6 for Details on our Glass Magazine Award Winning Serenity Series Sliding Door System

"Most Innovative Bath Enclosure Product"

RESIDENTIAL UPGRADES

BRINGING HIGH SCALE QUALITY TO DESIGNER BATHROOMS

COMMERCIAL PROJECTS

THE CHOICE OF MANY OF THE FINEST HOTELS, RESORTS, AND CONDOMINIUM COMPLEXES AROUND THE WORLD



C.R. LAURENCE COMPANY

Worldwide Manufacturer and Supplier

Glazing, Architectural, Railing, Screen, Construction, Industrial, and Automotive Supplies

crlaurence.com

crl-arch.com

usalum.com



PRIMA SERIES HINGES



Prima Hinges provide extra application possibilities. Their Top and Bottom Pivot style handles the weight of the door better than traditional "Side Mount" hinges, as well as allowing greater glass exposure, thus making for a more aesthetic enclosure. Prima Hinges can be mounted floor and ceiling, floor and wall, floor and fixed transom, floor and adjacent panel, or floor and header for enclosures not reaching the ceiling. CRL's new Special Top Mount Prima Hinge has a built-in adapter plate that allows use with our EZ-Adjust Header System.

SPECIFICATIONS:

For Glass Thickness: 5/16" to 3/8" (8 to 10 mm)
Tempered Safety Glass (Not Included)

Construction: Solid Brass

Hinge Swings: Full Rotation

Closing Type: Self-Centering When Within 15 Degrees of Closed Position

Glass Fabrication: Cut-Out Required

Finishes: Most Models Over 20 Stock Colors (Custom Finishes Also Available)

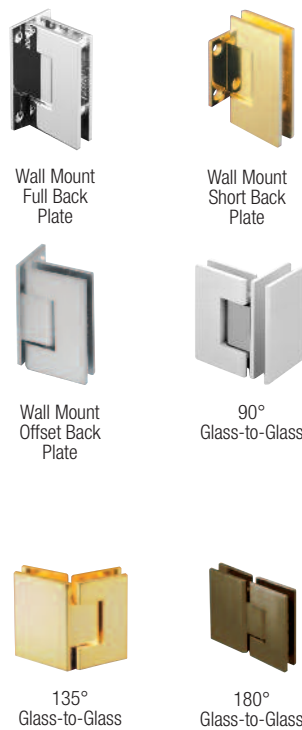
Includes: Gaskets, Screws, Glass Fabrication Details

NOTE: Larger Senior Prima Hinges are Available for 1/2" (12 mm) Thick Glass.

Smaller Junior Prima Hinges are Available for 1/4" (6 mm) Thick Glass.



VIENNA SERIES HINGES



The Vienna and Cologne Series Hinges are identical internally, only distinguished by their differing plate styles. The ideal hinges for wider and heavier doors, two hinges can accommodate up to a 36" (914 mm) wide door weighing up to 110 lbs (50 kg), while three hinges can accommodate up to a 36" (914 mm) wide door up to 140 lbs (63.5 kg). Two strategically placed steel pins allow the hinge to be used in a "mouse-ear" shaped cut-out, thus providing a non-slip safety feature. If a rectangular style cut-out is needed, the two steel pins may be removed, allowing more adjustability. Adjustable models (not shown), that have up to 90 degrees adjustment to accommodate "off angles" are also available, as well as "Positive Close Models" (not shown) that allow the door to close to a precise closing position each time.

SPECIFICATIONS:

For Glass Thickness: 3/8" to 1/2" (10 to 12 mm) Tempered Safety Glass (Not Included)

Construction: Solid Brass

Hinge Swings: 90 Degrees Inwards and Outwards

Closing Type: Self-Centering When Within 15 Degrees of Closed Position

Glass Fabrication: Cut-Out Required

Finishes: Most Models Over 20 Stock Colors (Custom Finishes Also Available)

Includes: Gaskets, Screws, Glass Fabrication Details



COLOGNE SERIES HINGES





OUR MOST POPULAR SERIES!

GENEVA SERIES HINGES



Wall Mount
Full Back Plate



Wall Mount
Short Back Plate



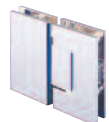
Wall Mount
Offset Back Plate



90°
Glass-to-Glass



135°
Glass-to-Glass



180°
Glass-to-Glass

Geneva Hinges offer three varieties of Wall Mount Hinges, in addition to three Glass-to-Glass models. Pinnacle Hinges also offer three styles of Wall Mount Hinges, as well as three Glass-to-Glass models. Adjustable models (not pictured here) that feature up to 90 degrees adjustment to accommodate "off angles" are also available. Geneva and Pinnacle Series Hinges contain the same internal mechanism but offer different styles of hinge plates. Reversible pivot pins contained in the hinge allow five degree door closing position option.

SPECIFICATIONS:

For Glass Thickness: 5/16", 3/8", and 1/2" (8, 10, and 12 mm) Tempered Safety Glass (Not Included)

Construction: Solid Brass

Hinge Swings: 90 Degrees Inwards and Outwards

Closing Type: Self-Centering When Within 15 Degrees of Closed Position

Glass Fabrication: Cut-Out Required

Finishes: Most Models Over 20 Stock Colors (Custom Finishes Also Available)

Includes: Gaskets, Screws, Glass Fabrication Details



PINNACLE SERIES HINGES



Wall Mount
Full Back Plate



Wall Mount
Short Back Plate



Wall Mount
Offset Back Plate



90°
Glass-to-Glass



135°
Glass-to-Glass



180°
Glass-to-Glass



Typical Header-Free Design

HEADER-FREE SHOWER ENCLOSURE SYSTEM

- Must Utilize CRL Established Criteria for Installing Safe Enclosure (See Below)
- Choose Your Own Set of Current CRL Stock Products to Install, as Long as Criteria is Followed
- Provides the "Frameless" Alternative Many Customers Demand

Header-Free Enclosure Criteria

- Must use 1/2" (12 mm) glass on fixed panel from which the door hinges
- Fixed panel from which the door hinges can't exceed 22" (559 mm) in width or 84" (2.13 m) in height
- Door can be either 3/8" (10 mm) or 1/2" (12 mm) glass
- Door width not to exceed 30" (762 mm)
- Must use one type of the following brackets fastened to the vertical wall on the fixed panel from which the door hinges: GE90S, P190S, R090S or CA90S
- The same number of brackets will be used on the wall as there are glass-to-glass hinges
- Only a fixed panel fastened to a vertical wall can be used to hinge from. No hinging from a fixed panel fastened to another fixed panel
- Fixed panel from which the door hinges must have valid bottom support (does not have to be the same as bracket noted above)

Engineered and Approved Design By CRL (Glass Not Included). See crlaurence.com for Approved Design Criteria



TOP OR BOTTOM MOUNT PIVOT HINGE WITH ATTACHED U-CLAMP (No Header Required When Following CRL Engineered Criteria, see crlaurence.com)

Prima Series for 5/16" and 3/8"
(8 and 10 mm) Glass



Model PPH07

Senior Prima Series
for 1/2" (12 mm) Glass



Model SRPPH07

Cardiff Series
for 5/16" and 3/8" (8 and 10 mm) Glass



Model CAR07



Model PPH0735R
(Right Hand Model Shown)



SPECIFICATIONS:

For Glass Thickness: 5/16" to 1/2" (8 to 12 mm)
Tempered Safety Glass (Not Included)

Prima and Cardiff: 5/16" and 3/8"
(8 and 10 mm) Tempered Safety Glass

Senior Prima: 1/2" (12 mm) Tempered
Safety Glass

Hinge Swings: Full Rotation

Closing Type: Self-Centering When Within
15 Degrees of Closed Position

Glass Fabrication: Cut-Out Required for Hinge;
Hole Required for Clamp

Finishes: Stocked in Eight Finishes

Includes: Gaskets, Screws, Glass Fabrication Details

See crlaurence.com for
Approved Design Criteria

- Provides Alternative to Using Traditional Horizontal Metal Header Systems Across Enclosure
- CRL Engineered and Designed Criteria Must Be Followed for Safe Installation
- Typically Used With Standard PPH01 Pivot Hinge at Bottom of Door

- Can Also Be Mounted at Bottom of Door and Adjacent Panel for Symmetry
- Stocked in up to Eight Popular Finishes, With Custom Finishes Available
- Models for 5/16", 3/8", and 1/2" (8, 10, and 12 mm) Thick Tempered Glass

New Top and Bottom Pivot Hinges with Attached U-Clamp answer the question that many architects, designers, and customers have asked, "Do I need to have a Header on my beautiful new shower enclosure"? Well, sometimes the answer may be yes, but carefully following CRL engineered design criteria for these hinges may allow you this alternative appearance. This combination of Hinge and U-Clamp allows the installer to mount a shower door next to an adjacent 180 or 135 degree fixed panel without a Header. The same look may be done at the bottom of the door and fixed panel, or a Standard Top and Bottom Mount Pivot Hinge (see Page 2) may be used at the bottom of the door, with other clamps or U-Channel chosen for the bottom of the fixed panel. Stocked in eight popular finishes, with custom finishes available. Models available for 5/16", 3/8", and 1/2" (8, 10, and 12 mm) thick tempered glass.



Chrome



Satin Chrome
(Matte)



Brass



Brushed
Nickel



Satin
Nickel



Polished
Nickel



Oil Rubbed
Bronze



Brushed
Bronze



MADRID SERIES HINGE / CLAMP

The Madrid Series of Notch-Free Hinges has added a model that is sure to make your next frameless shower door installation simple, yet elegant. This combination of a Hinge/Clamp continues with the Madrid tradition of no hinge cut-out or holes required for the door. The new feature that this model adds is the ability to be able to have virtually unlimited horizontal adjustment. The door overlaps the fixed panel it hinges from. The amount the door overlaps is the adjustability factor. This allows the use of pre-ordered glass panels of a designated width, then used in conjunction with the door size of your choice. Mandatory use of 1" (25.4 mm) or 1.5" (38.1 mm) height heavy wall Dry Glaze U-Channel and Vinyl (both sold separately) ensures the rigidity required for this system.

The MA06 Model is for use with a 3/8" (10 mm) thick door, and an adjacent 1/2" (12 mm) thick panel. The MA07 Model is for use with a 5/16" (8 mm) thick door and an adjacent 3/8" (10 mm) thick panel. Constructed of solid brass, this out-swing only Hinge will close tightly against the customer supplied strike jamb. See crlaurence.com for Mounting Criteria of Header-Free installation.



Chrome



Satin Chrome
(Matte)



Brass



Brushed
Nickel



Oil Rubbed
Bronze



SPECIFICATIONS:

Glass Thickness for MA06 Model: 3/8" (10 mm) Door and 1/2" (12 mm) Panel(s) Tempered Safety Glass (Not Included)

Glass Thickness for MA07 Model: 5/16" (8 mm) Door and 3/8" (10 mm) Panel(s) Tempered Safety Glass (Not Included)

Construction: Solid Brass

Hinge Swings: Out Only

Closing Type: Tight Closure to Strike Jamb (Not Supplied)

No Cut-Out for Door; Fabrication Required for Fixed Panel Being Hinged From

Maximum Door Size: Width 36" (914 mm), Height 84" (2.13 mm) - Do Not Exceed Either

Finishes: Stocked in up to Five Finishes

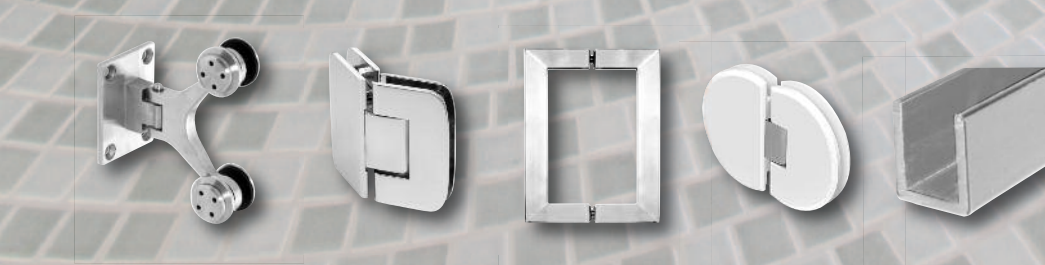
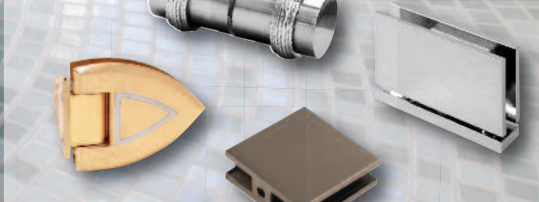
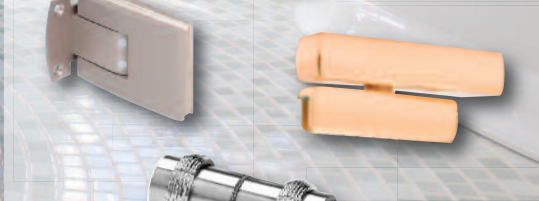
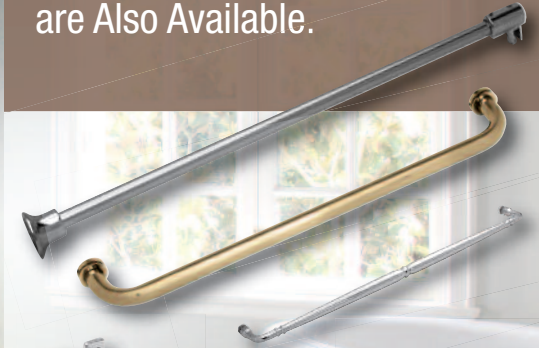
Includes: Gaskets and Mounting Hardware

This Hinge Series is Patented (Patent Number 7,607,199)





CRL Offers Over 20 Varieties of Hinge Series in Over 20 Finishes to Accommodate 1/4" to 1/2" (6 mm to 12 mm) Thick Glass and Match Most Any Modern Bathroom Décor. A Full Line of Accessory Items are Also Available.





SERENITY SERIES SLIDING DOOR SYSTEM

180 DEGREE STANDARD KIT CONSISTS OF:

- 1 - 78-3/4" (2 m) Length Header Support Bar
- 2 - Rollers
- 2 - Stoppers
- 2 - Anti-Lift Fittings
- 2 - Track Holder Fittings for Wall
- 2 - Track Holder Fittings for Fixed Panel
- 1 - Thru-Glass Pull
- 1 - Door Guide



- Unique System With Rollers Above the Header Support Bar
- System Features One Sliding Door and One Fixed Panel
- Use of Minimal Hardware Gives Door an Almost Floating Appearance
- Specially Designed Roller Bearings Allow Easy Opening and Closing of Door
- Accessory Kit Available for 90 Degree Return Panels
- For 5/16" or 3/8" (8 or 10 mm) Thick Tempered Safety Glass: (Not Included)
- Choice of Durable Polished or Brushed Stainless Steel Finishes



ESSENCE SERIES ROLLING SHOWER DOOR SYSTEM

- Headerless System Offers Frameless Look Both Vertically and Horizontally
- Bottom Rolling System Has Integrated Height Adjustment
- Rollers Include Anti-Derail/Anti-Pinch Guard
- Water Management With Use of Clear Vertical Jamb and Bottom Track
- Stocked in Four Popular Finishes
- For Use Only With 1/2" (12 mm) Thick Tempered Glass (Not Included)

BASIC ESSENCE KIT INCLUDES THE FOLLOWING:

- Two - Bottom Rollers
- One - Top Door Guide
- One - 64" (1.63 m) Length Bottom Track
- One - 98" (2.49 m) Length U-Channel
- One - 98" (2.49 m) Length Plastic L-Seal
- One - SDCEC12 End Cap for Channel
- One - M6164 Shower Door Bumper (Glass Clamps, Handle or Knob, and Other Accessories Sold Separately)



SPECIFICATIONS:

- For Glass Thickness:** 1/2" (12 mm) Tempered Safety Glass (Not Included)
- Materials:** Rollers and Top Guide, Constructed of Solid Brass; Bottom Sliding Track and U-Channel Constructed of Aluminum; Clear Plastic L-Jamb
- Maximum Door Size:** Do Not Exceed Either 31" (787 mm) Wide or 112 Pounds (50.8 kg)
- Basic Kit Fabrication:** Notch Required for Bottom Rollers, Holes Required for Top Guide (see crlaurence.com for details)

Stocked in Four Standard Finishes



'ALL-GLASS' RESTROOM PARTITION SYSTEM

- Utilizes CRL Vienna or Cologne Series Hinges



- 'All-Glass' Look Without Post Interruption for 1/2" (12 mm) Thick Tempered Safety Glass (Not Included)
- 2" x 3" (51 x 76 mm) Stainless Steel Posts With Concealed Base Fastener
- Posts Mounted Behind Glass to Maximize "Frameless" Appearance
- Built Per Your Specifications
- Utilizes CRL Vienna or Cologne Series Hinges
- Doors Accommodate Slide-Bolt Latches (Sold Separately)
- Allows Thru-Glass Mounted Optional Fixtures

This 'All-Glass' Restroom Partition System will modernize any commercial or institutional bathroom area with your choice of multiple architectural finishes. Since metal posts do not 'interrupt' the glass panels, a beautiful frameless environment is attained. The 'All-Glass' Restroom Partition System allows field adjustable height with a floating top mount appearance. No field fabrication is required, ensuring easy installation. CRL hardware is utilized for this system that is designed for use with 1/2" (12 mm) thick tempered glass. Customers may incorporate several optional fixtures as needed, such as coat hooks, toilet paper dispensers, toilet seat cover dispensers, and sanitary napkin disposal.

HYDROSLIDE SLIDING SHOWER DOOR KITS

- Excellent Design for Compact Areas
- Low Profile Header Allows More of the 'All-Glass' Look
- For 5/16" (8mm) and 3/8" (10 mm) Thick Tempered Safety Glass (Not Included)
- Clean Sleek Lines
- Quick and Easy Installation
- Accommodates a Wide Range of Shower Designs
- Complete Specifications Available at crlaurence.com

CRL Hydroslide Sliding Shower Door Kits feature the latest European 'all-glass' look. Kits are available in either 60" (1.52 m) or 84" (2.13 m) widths. Installers can cut the width to size, and height is optional as long as the sliding door glass weighs less than 88 lbs (40 kg). The 180 Degree Wall-to-Wall Installation only requires a 180 Degree Standard Kit for the installation. The 90 Degree Wall-to-Glass Installation requires a 180 Degree Standard Kit plus a 90 Degree Wall-to-Glass Accessory Kit for the installation. Individual or replacement parts can also be ordered. Bottom Glass Attachments, Handles or Knobs must be ordered separately. Custom units are also available.



HYDROSLIDE BI-FOLD HINGES

- Wall Mount and Glass-to-Glass Models
- Allows Door to Bi-Fold Into Enclosure
- Works in Conjunction With Hydroslide Sliding Kits

For more information see crlaurence.com



180 DEGREE STANDARD KIT CONSISTS OF:

- 1 - Sliding Glass Door Upper Track
- 2 - Hangers for Sliding Glass Door
- 2 - Sliding Glass Door Rollers
- 2 - Sliding Glass Door Roller Stops
- 1 - Sliding Glass Door Floor Guide
- 2 - 90 Degree Wall-to-Upper Track Connectors
- 2 - 180 Degree Glass-to-Sliding Track Connectors
- 1 - 36" (914 mm) Half-Round SDT980 Threshold
- 1 - 98" (2489 mm) DK98L L-Seal for Wall

Hydroslide Sliding Shower Door Kits were designed for full standing showers or above bathtubs. The Hydroslide System can accommodate a wide range of shower designs with fixed glass panels on either end, or both sides at 90 or 180 degrees. The Hydroslide System also accommodates the option of floor-to-near-ceiling glass panels with a sliding door. Hydroslide Sliding Shower Door Kits feature the latest European 'all-glass' look. Kits are available in either 60" (1.52 m) or 84" (2.13 m) widths. Installers can cut the width to size, and height is optional as long as the sliding door glass weighs less than 88 lbs (40 kg). The 180 Degree Wall-to-Wall Installation only requires the 180 Degree Standard Kit for the installation.

< 180 Degree Wall-to-Wall Installation Uses Our 180 Degree Standard Kit



*90 DEGREE WALL-TO-GLASS ACCESSORY KIT CONSISTS OF:

- 1 - 90 Degree Glass-to-Sliding Track Connector
- 1 - 90 Degree Wall-to-Glass Bracket

*90 Degree Units require that you order one 180 Degree Standard Kit plus one 90 Degree Accessory Kit

The 90 Degree Wall-to-Glass Installation requires the 180 Degree Standard Kit, plus the 90 Degree Wall-to-Glass Accessory Kit for the installation. Individual or replacement parts can also be ordered. Bottom Fixed Glass Attachments and Handles or Knobs must be ordered separately. Hydroslide Kits come in four finishes: Chrome Fittings with a Brite Anodized Sliding Track, Polished Brass with a Brite Gold Anodized Sliding Track, Brushed Nickel with Brushed Nickel Anodized Sliding Track, and Oil Rubbed Bronze with Oil Rubbed Bronze Anodized Sliding Track. Each Kit comes with complete fabrication and installation instructions.

SPECIFICATIONS

Glass Thickness Range: 5/16" (8 mm) to 3/8" (10 mm)
Tempered Safety Glass: (Not Included)

Materials: Plated or Lacquered Solid Brass Fittings; Anodized Aluminum Sliding Door Track

Maximum Door Weight: 88 lbs (40 kg)

Fabrication: Holes Required in Fixed Panel and Door

Includes: Gaskets, Screws, Glass Fabrication Information
Complete installation instructions along with glass and metal cutting formula available at crlaurence.com

< 90 Degree Wall-to-Glass Installation Uses Our 180 Degree Standard Kit Plus Our 90 Degree Accessory Kit

Stocked in Four Standard Finishes



Chrome



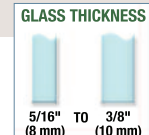
Brass



Brushed Nickel



Oil Rubbed Bronze





CRL MASTER AND SPECIALTY CATALOGS

- 03 SEALANTS, ADHESIVES, AND FASTENERS
- 23 FRAMELESS SHOWER DOOR HARDWARE
- 43 AUTO GLASS TOOLS AND WINDOWS
- 53R GLASS AND GLAZING HARDWARE
- 63A ARCHITECTURAL HARDWARE
- 63R ARCHITECTURAL RAILING
- 73 TOOLS, MACHINERY, AND EQUIPMENT
- 83R DOOR AND WINDOW REPLACEMENT HARDWARE



SD12
FRAMELESS SHOWER DOOR HARDWARE AND SUPPLIES



FS14
FRAMELESS SLIDING SHOWER DOOR SYSTEMS



ST14
FRAMELESS SHOWER DOOR PROFESSIONAL INSTALLATION TOOLS



HS12
HOSPITALITY AND SERVICE HARDWARE



AH11
ARCHITECTURAL HARDWARE



HR11
ARCHITECTURAL RAILING SYSTEMS



LP11
COMMERCIAL DOOR HANDLES



AM09
ARCHITECTURAL METALS



CRL14D
DOORS AND ENTRANCE SYSTEMS



DC14
DOOR CONTROLS HARDWARE AND ACCESSORIES



TH10
TRANSACTION AND SECURITY HARDWARE



TAJ11
TAJIMA ARCHITECTURAL METALS



HW2010
TUBULAR ARCHITECTURAL HARDWARE



B2010
TEMPERED GLASS DOORS, PANIC, DEADBOLT AND DUMMY HANDLES



M2010
RAILINGS, SMOKE BAFFLES, GLASS GATES



D2010
DISPLAY CASE DOOR SERIES 1301



GB10
GLASS BONDING SYSTEM



SC12
STANDOFF AND CLAMP HARDWARE



SC14
SUN CONTROL SYSTEMS



SCR14
SECURITY DOORS; DOOR & WINDOW SCREEN SYSTEMS

Welcome to the C.R. Laurence Global Web Site



ONLINE FEATURES INCLUDE:

- Access to All CRL Products Through CRL's Easy-to-Use Product Index
- Fast and Secure Log On Process
- Ask Technical and Product Questions Online
- Find Products and Pricing Online Instantly
- View All Current Catalogs Online
- Technical Articles and Product Support
- Ordering and Shipping Information
- Beautiful Installation Photos of CRL Products
- CRL Locations With Addresses, Directions, Phone and Fax Numbers
- Direct E-Mail Connections to CRL Departments
- Account Policies and Credit Terms
- A Calendar of Industry Trade Shows

CRL C.R. LAURENCE COMPANY

C.R. Laurence Co., Inc.
Corporate Headquarters
CRL UNITED STATES | crlaurence.com
2503 E. Vernon Ave., Los Angeles, California 90058-1897
Toll Free Phone: (800) 421-6144 • Toll Free Fax: (800) 262-3299
International Phone: (323) 588-1281 • International Fax: (323) 581-6522

C.R. Laurence of Canada
Canadian Headquarters
CRL CANADA | crlaurence.ca
65 Tigi Court, Concord, Ontario L4K 5E4
Toll Free Phone: (800) 421-6144 • Toll Free Fax: (800) 262-3299
International Phone: (905) 303-7966 • International Fax: (905) 303-7965

C.R. Laurence Australia Pty Ltd
Australian Headquarters
CRL Australia | crlaurence.com.au
9 Shale Place, Eastern Creek, NSW 2766
Toll Free Phone: 1800 424 275 • Toll Free Fax: 1800 813 013
International Phone: +61 (2) 9851-3444 • International Fax: +61 (2) 9851-3445

C.R. Laurence of Europe Ltd.
European Headquarters
CRL UK | crlaurence.co.uk
Charles Babbage Ave., Kingsway Business Park, Rochdale, OL16 4NW England
FreePhone: 00 800 0421 6144 • Freefax: 00 800 0262 3299
International Phone: +44 (0) 1706 863 600 • International Fax: +44 (0) 1706 869 860

C.R. Laurence of Europe GMBH
Stuttgart Area, GERMANY
CRL GMBH | crlaurence.de | crlaurence.eu
Boschstrasse 7, D-74360, Ilfeld, Germany
FreePhone: 00 800 0421 6144 • Freefax: 00 800 0262 3299
International Phone: +49 (0)7062 915 93 15 • International Fax: +49 (0)7062 915 93 16