



**NEW**

## CRL Chemical Anchor System

- The strongest way to fit standoffs
- Odour free
- Sets harder than concrete



**CRL**®

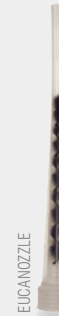
# CRL Chemical Anchor System - The strongest way to fit standoffs

Odour free • Sets harder than concrete • Suitable for all substrates



## SIMPLE TO INSTALL

1. Drill hole.
  2. Attach the mixing nozzle to the tube. Sleeves available for hollow bricks and blocks.
  3. Apply resin into hole / sleeve.
  4. Insert threaded rod and wait to set.
  5. Leave threaded rod proud of the hole, a standoff or other product can be fastened to the threaded rod.
- This product can be used with other applications.



EUCANOZZLE



EUCASLEEVE



EUCAPUMP



EUCAS300

**NEW**

**For information call FREE on 00 800 0421 6144  
Our technical advisers can help you!**

e: [CRL@crlaurence.co.uk](mailto:CRL@crlaurence.co.uk) f: 00 800 0262 3299 w: [crlaurence.co.uk](http://crlaurence.co.uk)

