

The Cabo soft slide shower door system is the first to offer the double soft-brake system on a frameless sliding shower door

European Head Office (UK and Europe)  
Charles Babbage Avenue  
Kingsway Business Park,  
Rochdale OL16 4NW, England

T: 00 800 0421 6144  
[crlaurence.co.uk](http://crlaurence.co.uk)

## Cabo soft slide shower door system

# Softly, softly.

## Introducing the Cabo Soft Slide Shower Door System

A frameless sliding shower door system that includes a double soft-brake closing system. The system which is completely concealed within the header softly cushions the door as it closes and opens.

If it's not CABO, it's not double soft close.

Square clamp shown on sliding panel

Bottom floor guide included

- Featuring the new double soft-brake system
- Hardware for one sliding door and one fixed panel
- Concealed overhead roller design
- Mounts wall-to-wall or wall-to-glass
- For use with 8, 10 or 12mm toughened glass (not included)
- Can accommodate doors weighing up to 80kg
- Available in three finishes, with custom finishes available

The Cabo soft slide series has two clamp cover designs (rounded or square), and is available in three architectural finishes.

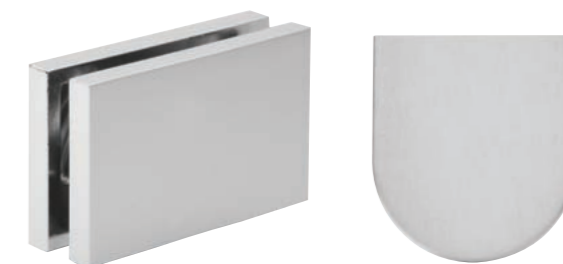
Each kit comes complete with a header, two top clamps, a bottom guide, a wall seal, and a half-round threshold. Bottom fixed glass attachments, handles, or knobs must be ordered separately.

Plumbing Fixture Not Included



CAT.NO. CAB90CH

90° return hardware kit (shown here) includes return bracket and wall clamp.



Square Clamp Style

Rounded Clamp Style

**NOTE:** Tempered glass is not included.

**SPECIFICATIONS:**

**Glass thickness range:** 8mm to 12mm toughened safety glass (not included)

**Material:** Anodized aluminum

**Maximum door weight:** 80kg

**Overall shower width:** Minimum 1.52m wide; maximum 2.13m wide

**Fabrication:** Holes required in sliding door

**Includes:** Gaskets, screws, and glass fabrication information

**Finish:** Available in Chrome, Satin Anodized, and Brushed Nickel

CAT. NO.	DESCRIPTION	FINISH
CABR84CH	2.13m 180 degree kits with headers - rounded clamp	Polished chrome*
CABS84CH	2.13m 180 degree kits with headers - square clamp	Polished chrome*
CAB90CH	90 degree return bracket	Polished chrome*

Minimum order: 1 each.  
See [crlaurence.co.uk](http://crlaurence.co.uk) for door weight and width requirements.  
\*Other finishes available: Satin Anodized, Brushed Nickel