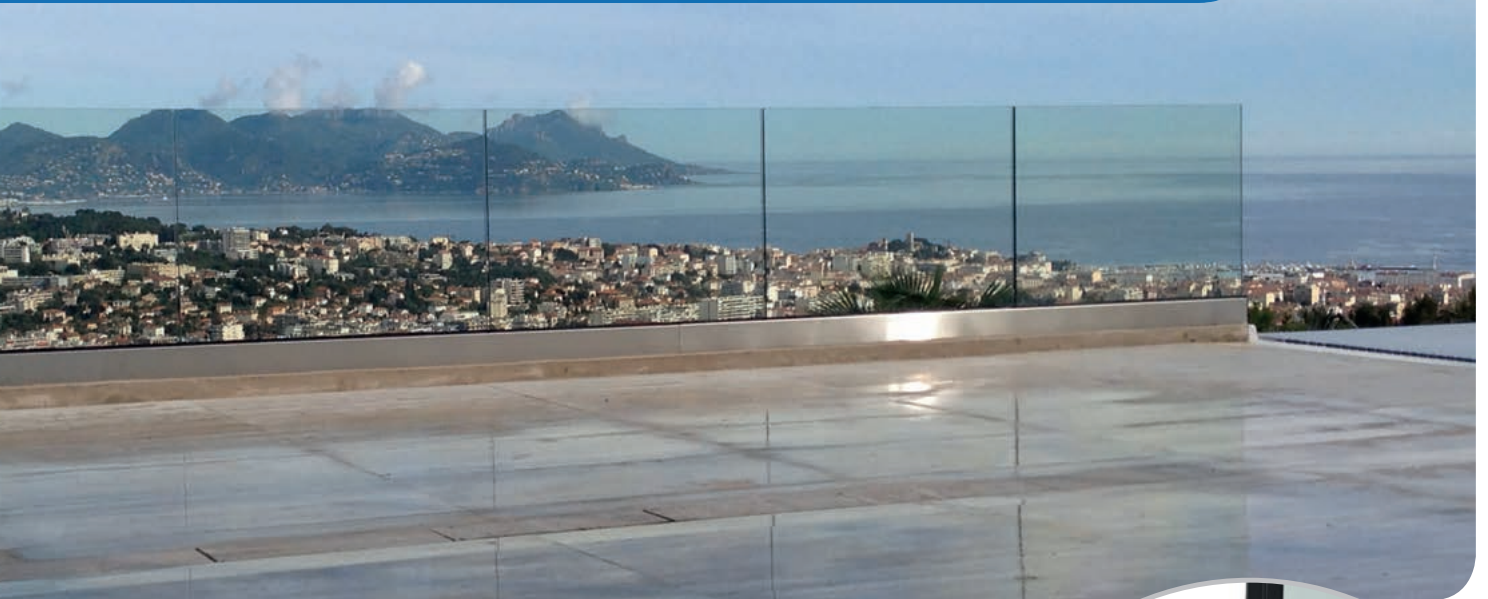


ADJUSTABLE TAPER-LOC® SYSTEM



Easy adjustment to
align glass panels

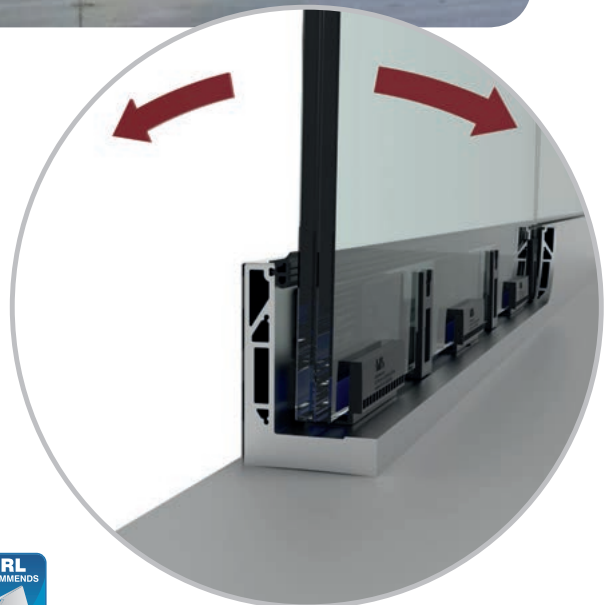
COMING SOON!



Adjustable Frameless Balustrade System

- The quickest and safest way to install glass balustrades
- Specially designed to allow up to 19mm of adjustment in either direction for glass panel alignment
- CRL's patented horizontal TAPER-LOC® design allows installation and removal of glass panels within minutes
- Includes a safety seal gasket that can be completely installed from the 'safe' side of the balustrade – no need for scaffolding
- Available for 17.52 and 21.52 mm laminated toughened glass
- Base shoe cladding available in a range of finishes
- Conforms to BS6180-2011 requirements

CONFORMS TO
BS 6180:2011



For information call FREE on 00 800 0421 6144

e: taperloc@crlaurence.co.uk f: 00 800 0262 3299 w: taper-loc.co.uk

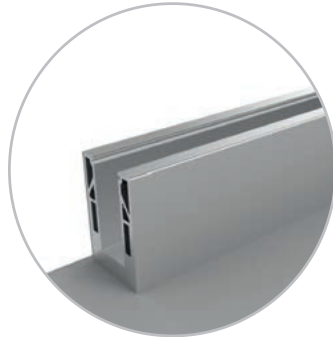
CRL

5 SIMPLE STEPS TO INSTALLING GLASS PANELS...

Completely install or remove the balustrade and glass panels from the safe side.

Safety seal eliminates the need to lean over the railing, and the expense of costly scaffolding.

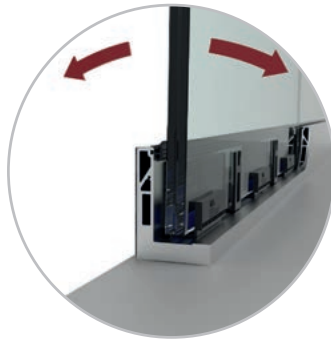
Ideal for replacing damaged glass panels.



Step 1 Install Base Shoe



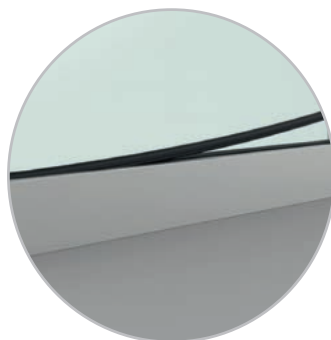
Step 2 Fix the 'safety seal' on the drop side from the pedestrian side



Step 3 Insert adjustable tapers and glass to adjust the vertical angle until aligned with adjacent panels



Step 4 Insert front taper set and lock into place with TLK12 tool



Step 5 Install safe side cladding and roll-in gasket

MILL FINISH

BRUSHED NICKEL FINISH

SATIN ANODISED FINISH

For information call FREE on 00 800 0421 6144

e: taperloc@crlaurence.co.uk f: 00 800 0262 3299 w: taper-loc.co.uk

