

U.S. ALUMINUM BLAST RESISTANT STOREFRONT

SERIES BR606 SYSTEM

BLAST RESISTANT STOREFRONT SERIES BR606

SYSTEMS SPECIFICATIONS

SPECIAL FEATURES:

- * U.S. Aluminum Blast Mitigation Systems are engineered and successfully tested to withstand explosions from pressure levels of one to six pounds per square inch.
- * BR604 & BR606 are Blast Resistant Storefront Systems engineered and successfully tested to withstand blast pressures mentioned above. These unique Storefront systems utilize our Storm Front Entrance as well as: screw spline panel assembly and erection, insulating and laminated glass siliconed in place, high performance subsill, and steel reinforced mullions. Made in U.S.A.
- * A Low Profile Air Resistant Threshold is offered for installations that have soffit overhangs greater than the entrance frame height. High Performance Water Resistant Thresholds are offered to provide superior water and air management, along with ramps to meet A.D.A. requirements.

TABLE OF CONTENTS: SERIES BR606

| # | SHEET | D E S C R I P T I O N |
|---|-------|--|
| 1 | COVER | TABLE OF CONTENTS / SPECIFICATIONS / SPECIAL FEATURES |
| 2 | 2.01 | BLAST RESISTANT STOREFRONT SERIES BR606 TYPICAL ELEVATIONS |
| 3 | 2.01A | BLAST RESISTANT STOREFRONT SERIES BR606 TYPICAL ELEVATIONS |
| 4 | 2.02 | BLAST RESISTANT STOREFRONT SERIES BR606 DETAILS |
| 5 | 2.03 | BLAST RESISTANT STOREFRONT SERIES BR606 DETAILS |
| 6 | 2.03A | BLAST RESISTANT STOREFRONT SERIES BR606 DETAILS |
| 7 | 2.04 | BLAST RESISTANT STOREFRONT SERIES BR606 DETAILS |
| 8 | 2.05 | BLAST RESISTANT STOREFRONT SERIES BR606 DETAILS |
| 9 | 2.06 | BLAST RESISTANT STOREFRONT SERIES BR606 DETAILS |

| SERIES | BLAST LOAD | FACE WIDTH | DEPTH | GLAZING INFILL | GLAZING METHOD |
|--------|------------|---------------|----------|----------------|----------------|
| BR606 | 6.0 PSI | 2-1/2" (63.5) | 5" (127) | 1-5/16" (33) | Exterior |

STANDARD ABBREVIATIONS

- RO ROUGH OPENING
- FD FRAME DIMENSION
- DLO DAYLIGHT OPENING
- DO DOOR OPENING
- DD DOOR DIMENSION
- SMC SURFACE MOUNTED CLOSER
- OHCC OVERHEAD CONCEALED CLOSER

GLAZING FOR BR606

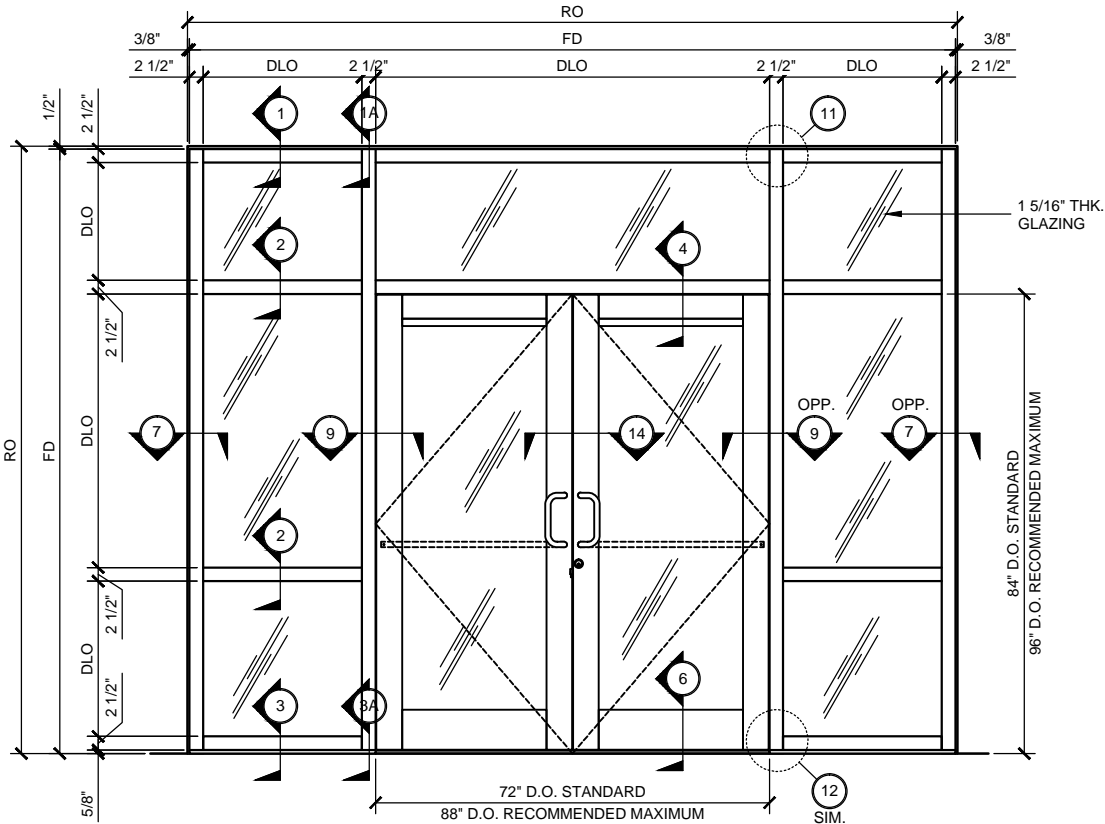
Glazing 6.0 psi Blast Load:

BR606 Storefront - 1-5/16" (33) thick IG unit made up of 1/4" (6) annealed, 1/2" (12.7) air space, and 1/2" (12.7) annealed laminate using .060 butacite by Dupont®.

BR606 Entrance Door - 1-5/16" (33) thick made up of 1/4" (6) tempered, 1/2" (12.7) air space and 1/2" (12.7) laminate using .060 butacite by Dupont®.

Revisions By:

U.S. ALUMINUM BLAST RESISTANT STOREFRONT SERIES BR606 SYSTEM



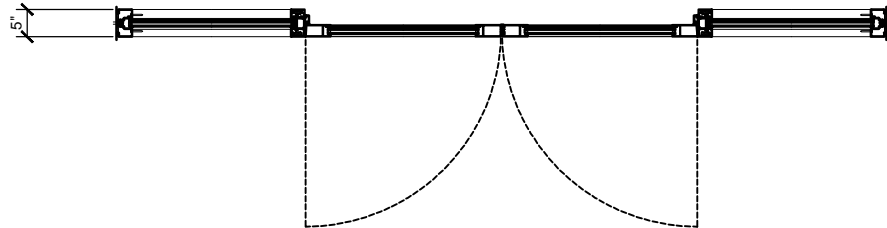
SERIES BR606 TYP. ELEVATION

WITH PAIR DOOR
WITH TRANSOM
3/4" = 1'-0"



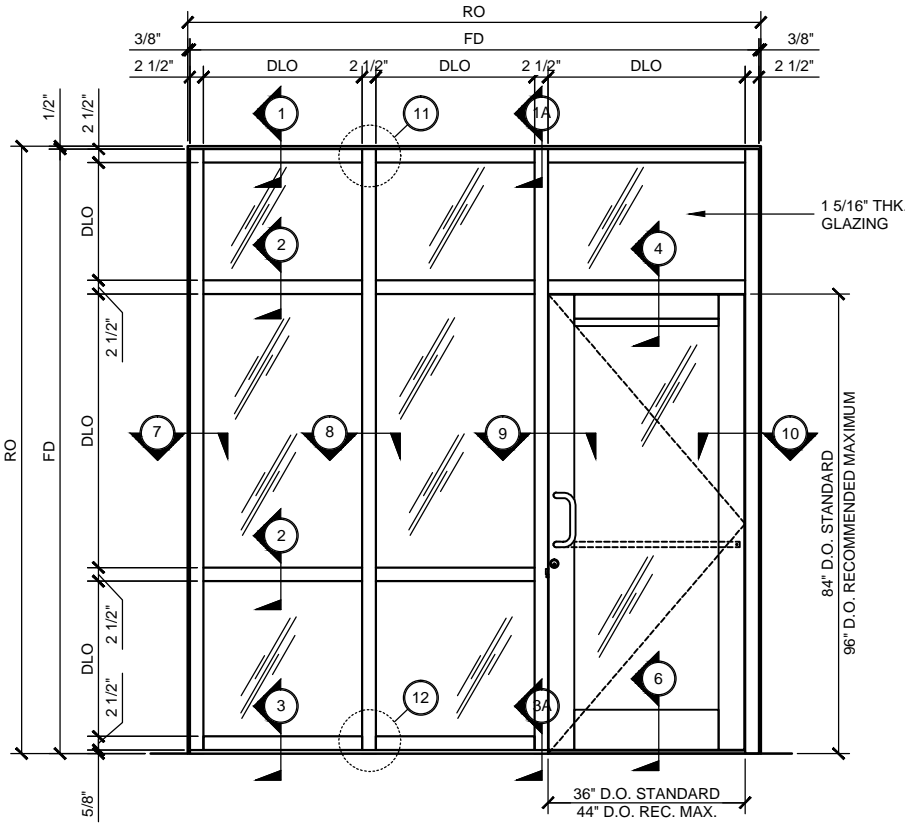
SERIES BR606 TYP. PLAN

WITH TRANSOM
3/4" = 1'-0"



SERIES BR606 TYP. PLAN

WITH PAIR DOOR
3/4" = 1'-0"



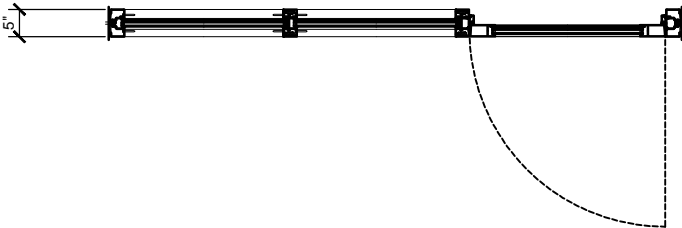
SERIES BR606 TYP. ELEVATION

WITH SINGLE DOOR
WITH TRANSOM
3/4" = 1'-0"



SERIES BR606 TYP. PLAN

WITH TRANSOM
3/4" = 1'-0"



SERIES BR606 TYP. PLAN

WITH SINGLE DOOR
3/4" = 1'-0"



SECTION

3/4" = 1'-0"



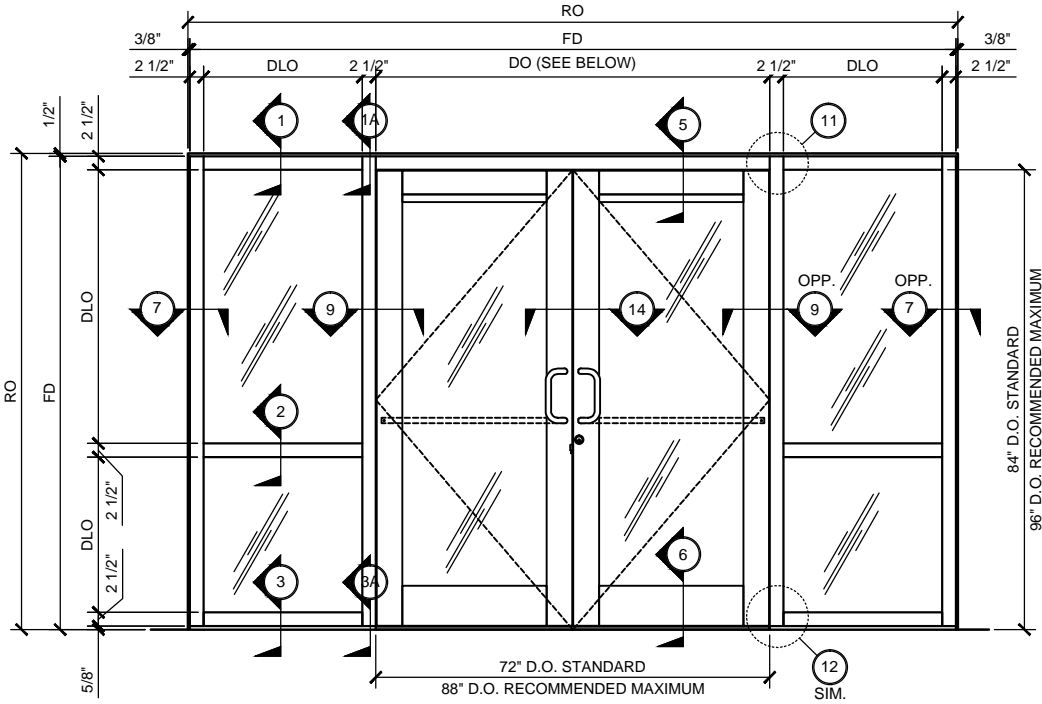
SECTION

3/4" = 1'-0"

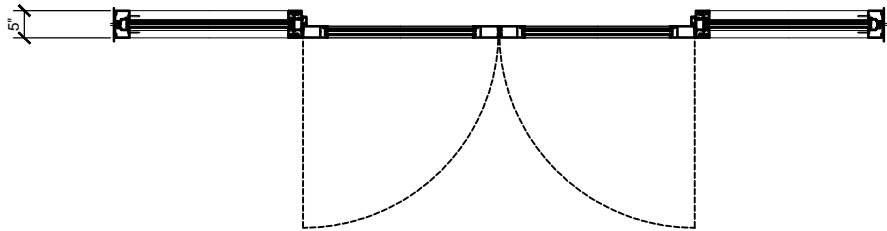
| STANDARD ABBREVIATIONS | |
|------------------------|---------------------------|
| RO | ROUGH OPENING |
| FD | FRAME DIMENSION |
| DLO | DAYLIGHT OPENING |
| DO | DOOR OPENING |
| DD | DOOR DIMENSION |
| SMC | SURFACE MOUNTED CLOSER |
| OHCC | OVERHEAD CONCEALED CLOSER |

Revisions By:

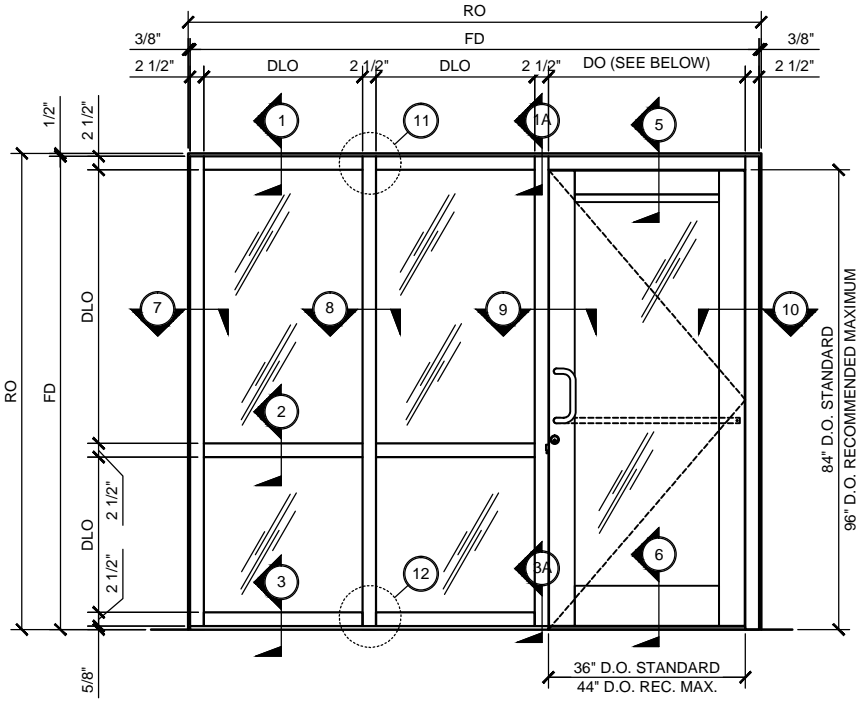
U.S. ALUMINUM BLAST RESISTANT STOREFRONT SERIES BR606 SYSTEM



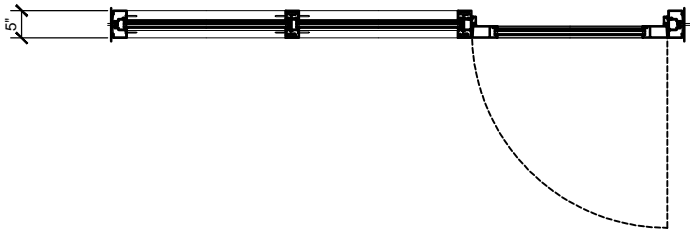
SERIES BR606 TYP. ELEVATION
WITH PAIR DOOR
WITHOUT TRANSOM
3/4" = 1'-0"



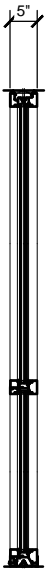
SERIES BR606 TYP. PLAN
WITH PAIR DOOR
3/4" = 1'-0"



SERIES BR606 TYP. ELEVATION
WITH SINGLE DOOR
WITHOUT TRANSOM
3/4" = 1'-0"



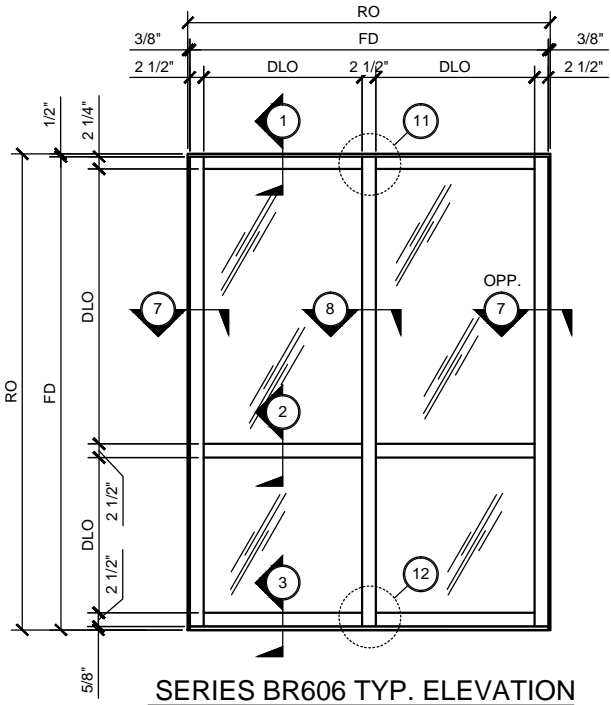
SERIES BR606 TYP. PLAN
WITH SINGLE DOOR
3/4" = 1'-0"



SECTION
3/4" = 1'-0"



SECTION
3/4" = 1'-0"



SERIES BR606 TYP. ELEVATION
SCALE: 3/4" = 1'-0"



SERIES BR606 TYP. PLAN
3/4" = 1'-0"

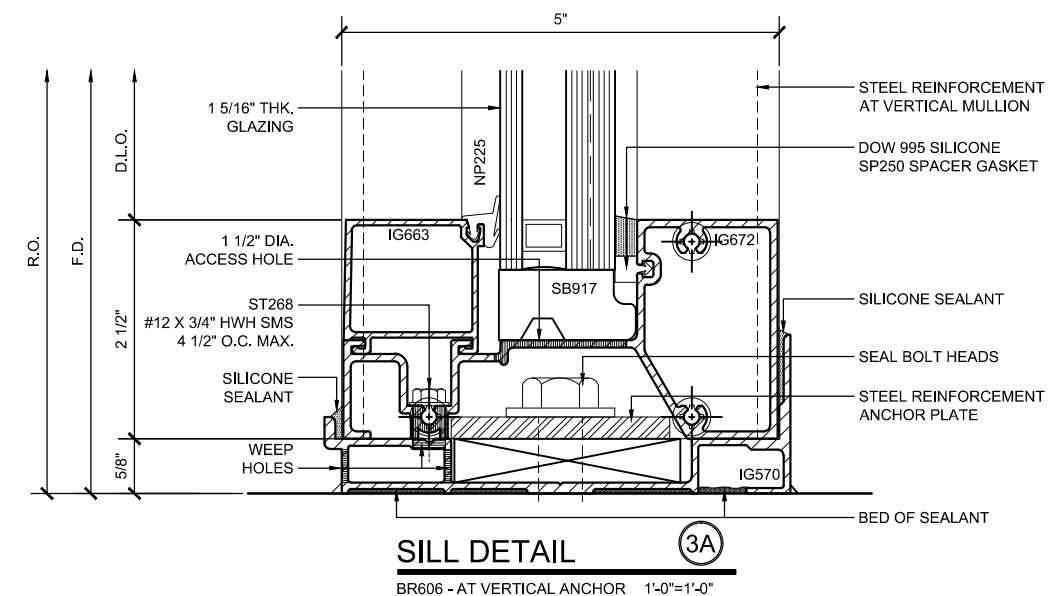
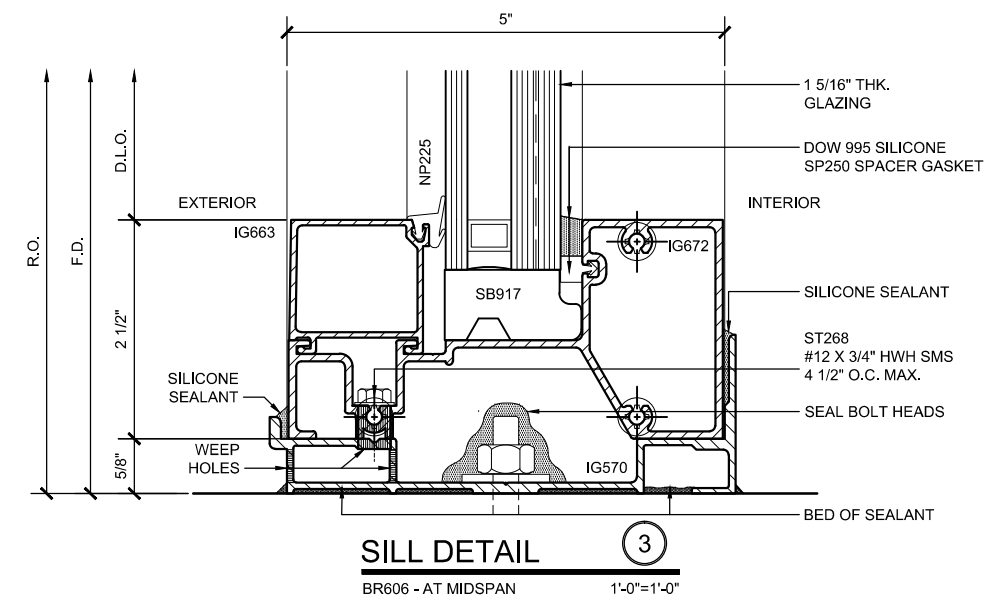
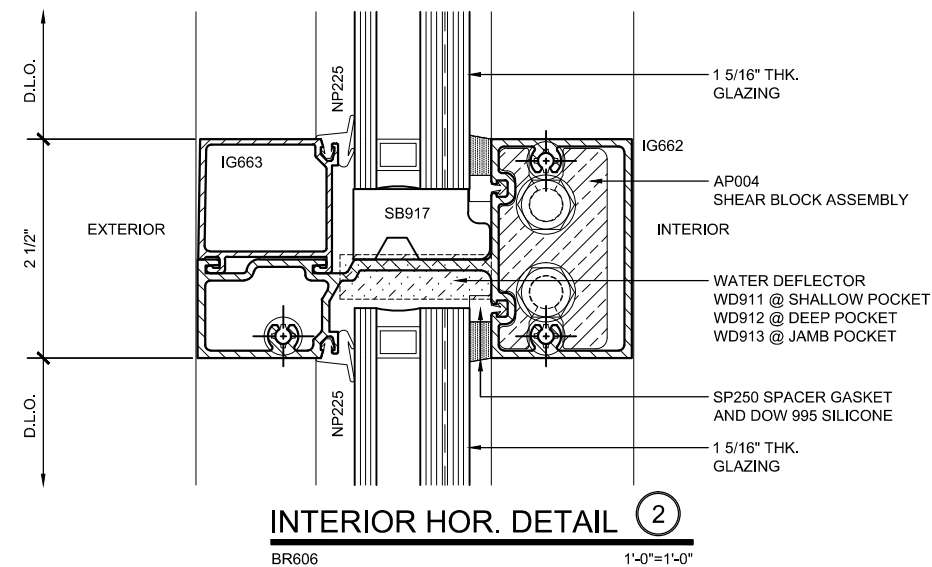
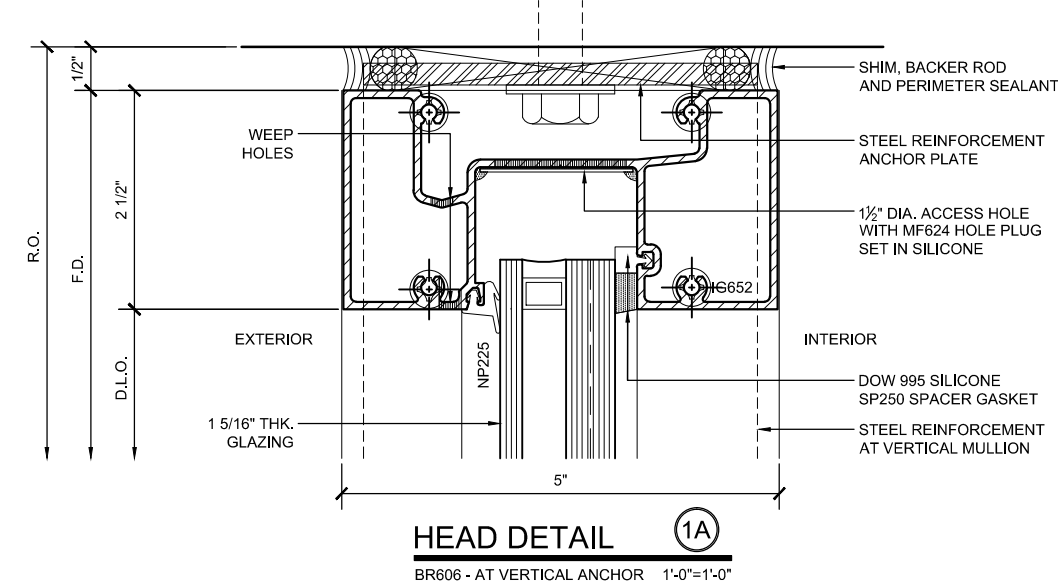
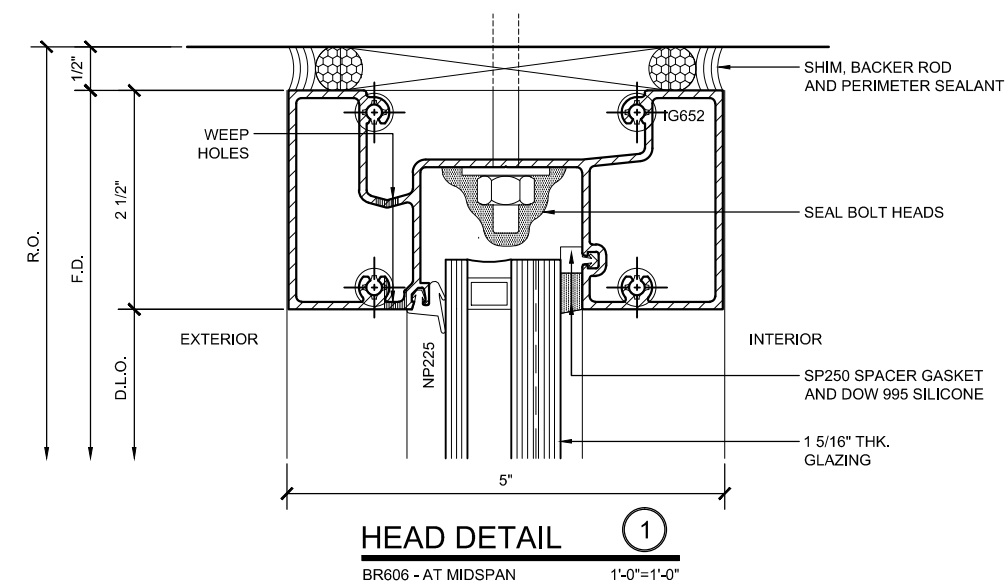
Revisions By:

U.S. ALUMINUM
C.R.LAURENCE CO. ARCHITECTURAL PRODUCTS
2503 E. Yermoland Avenue, Los Angeles, CA 90058-1897
PH (800) 421-6144 FX (800) 587-7501 www.claluminum.com

U.S. ALUMINUM
BLAST RESISTANT STOREFRONTS
DEFENDER SERIES BR606
SYSTEM DRAWINGS

Drawn By: RPD
Date: 03/27/15
Scale: AS NOTED
File Name: BR606.dwg
Sheet

U.S. ALUMINUM BLAST RESISTANT STOREFRONT SERIES BR606 SYSTEM



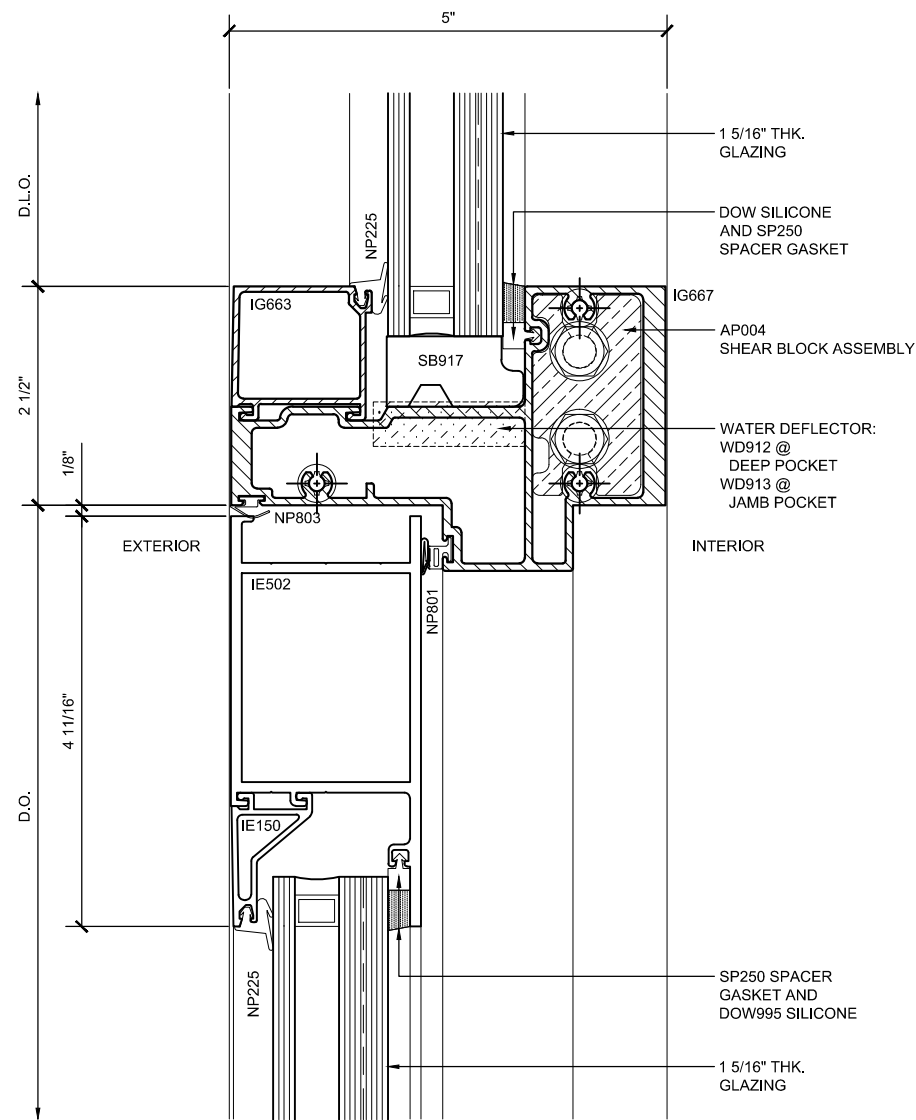
DEFENDER SERIES BR606 - SYSTEM DETAILS

Revisions By:

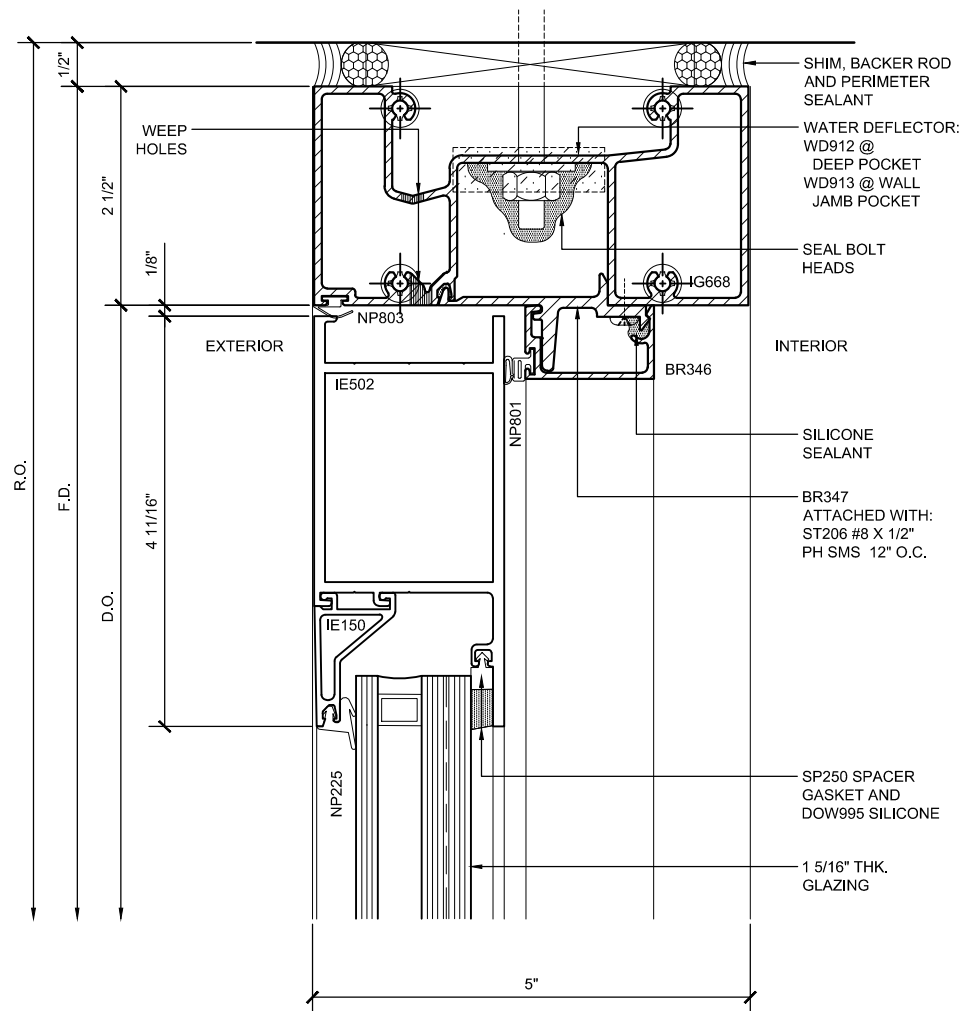
U.S. ALUMINUM
C.R. LAURENCE CO. ARCHITECTURAL PRODUCTS
2503 E. Vernon Avenue, Los Angeles, CA 90058-1897
PH: (800) 421-6144 FX: (800) 567-7201 WWW: clalurence.com

U.S. ALUMINUM
BLAST RESISTANT STOREFRONTS
DEFENDER SERIES BR606
SYSTEM DRAWINGS

Drawn By: RPD
Date: 03/27/15
Scale: AS NOTED
File Name: BR606.dwg
Sheet



DOOR HEAD DETAIL 4
BR606 - WITH TRANSOM
1'-0\"/>



DOOR HEAD DETAIL 5
BR606 - WITHOUT TRANSOM
1'-0\"/>

DEFENDER SERIES BR606 - SYSTEM DETAILS

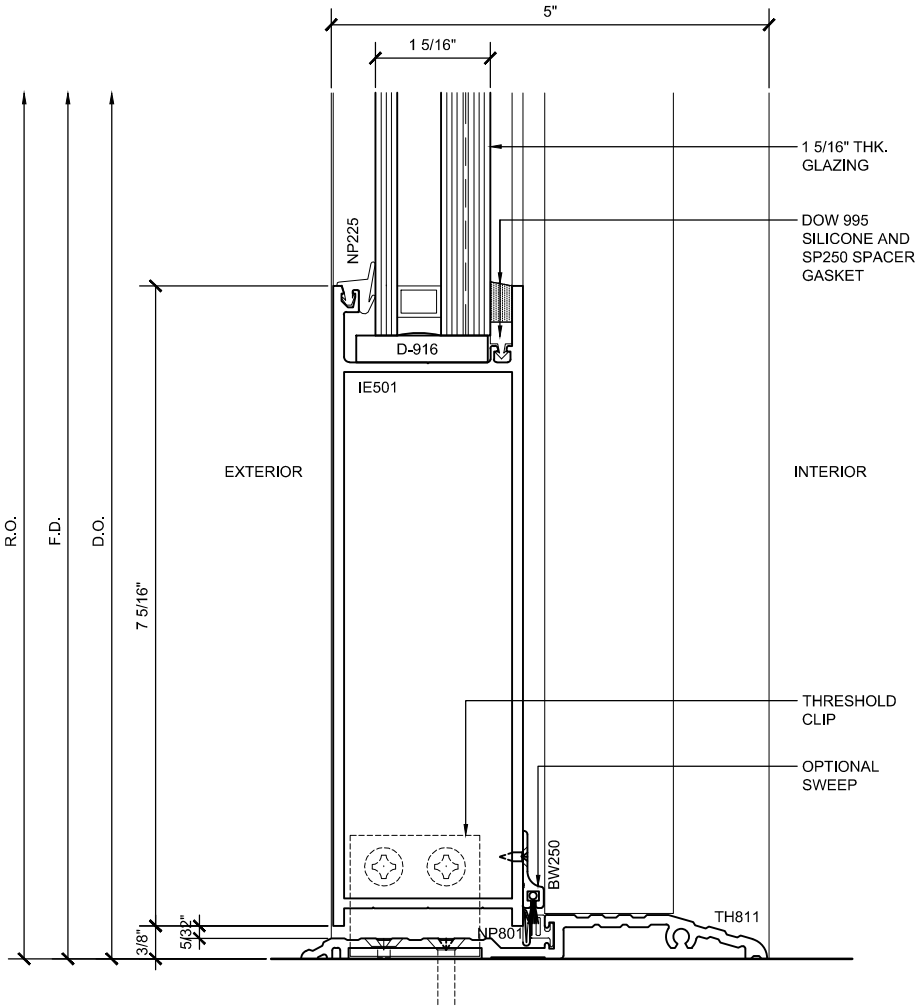
Revisions By:



C.R. LAURENCE CO. ARCHITECTURAL PRODUCTS
2503 E. Vernon Avenue, Los Angeles, CA 90058-1897
PH (800) 421-6144 FX (800) 587-7201 www.crlaurence.com

U.S. ALUMINUM
BLAST RESISTANT STOREFRONTS
DEFENDER SERIES BR606
SYSTEM DRAWINGS

Drawn By: RPD
Date: 03/27/15
Scale: AS NOTED
File Name: BR606.dwg
Sheet

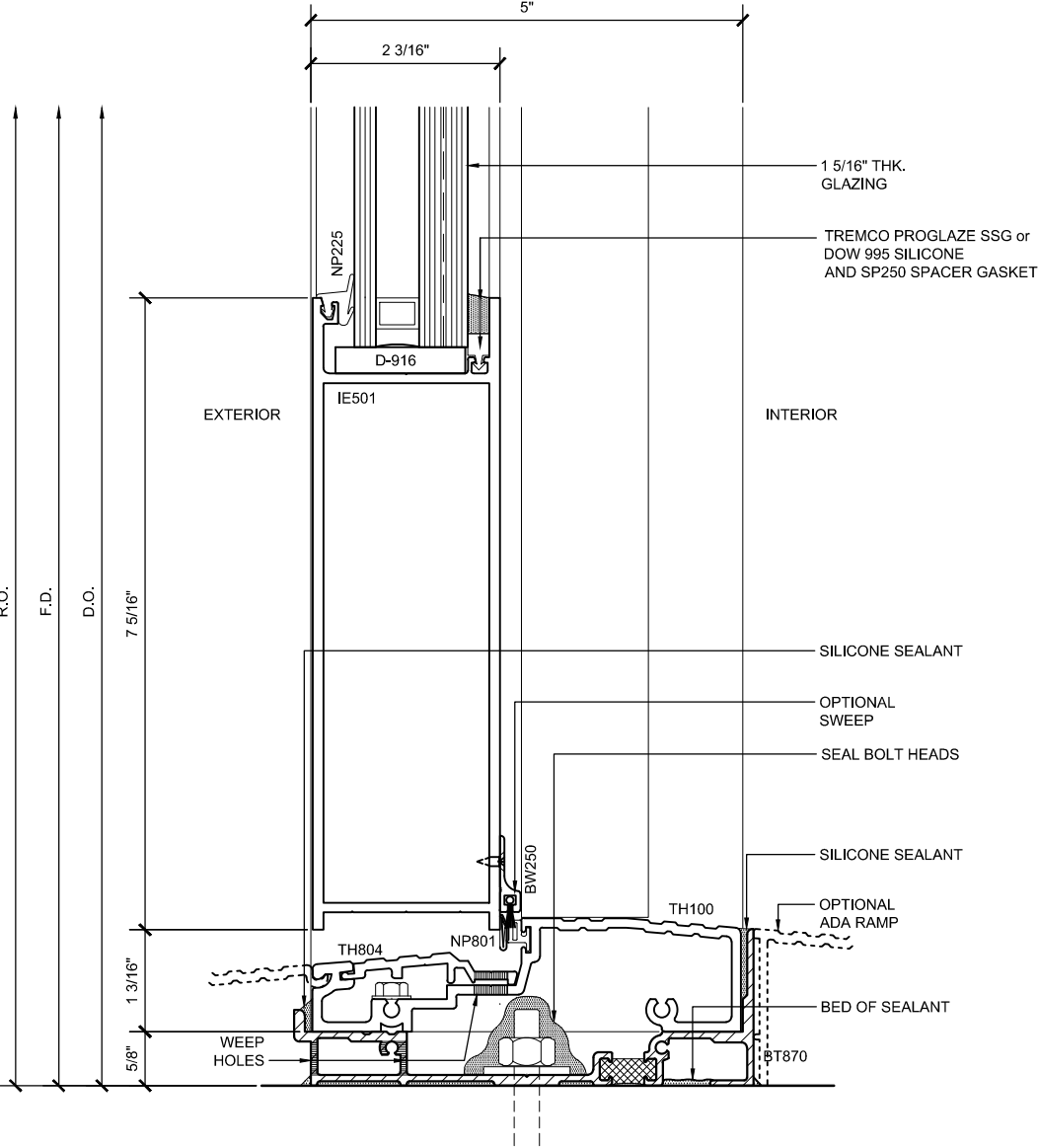


DOOR SILL DETAIL

6

BR606

1'-0"=1'-0"



DOOR SILL DETAIL

6A

BT601 - WITH HIGH PERFORMANCE
WATER-RESISTANT THRESHOLD

1'-0"=1'-0"

Revisions By:

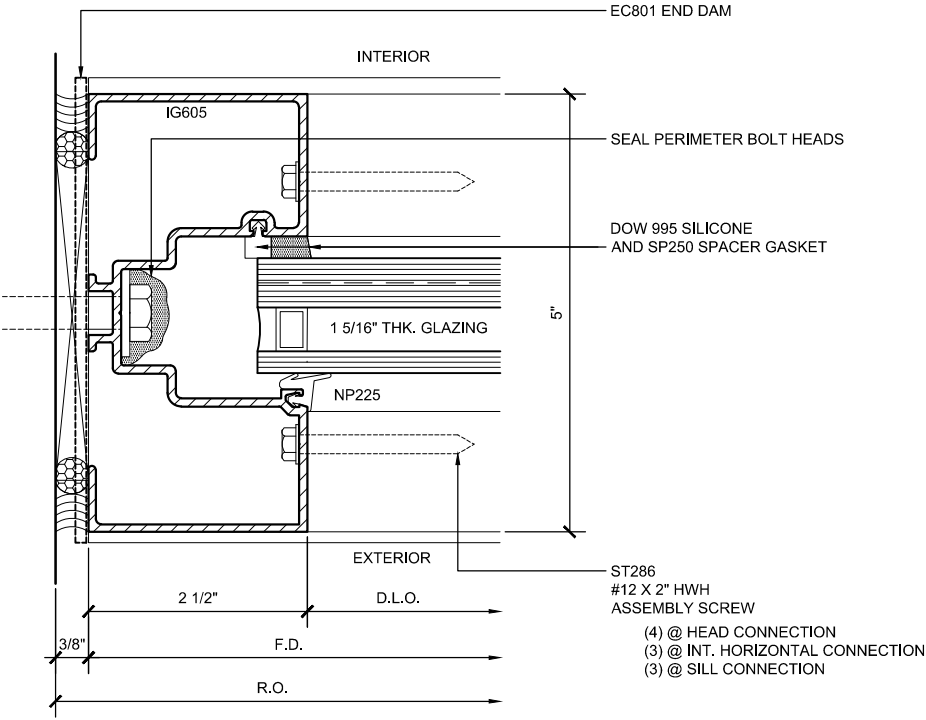
CAL
ALUMINUM
C.R. LAURENCE CO. ARCHITECTURAL PRODUCTS
2503 E. Vernon Avenue, Los Angeles, CA 90058-1897
PH (800) 421-6144 FX (800) 587-7201 www.crlaurence.com

Discription:
U.S. ALUMINUM
BLAST RESISTANT STOREFRONTS
DEFENDER SERIES BR606
SYSTEM DRAWINGS

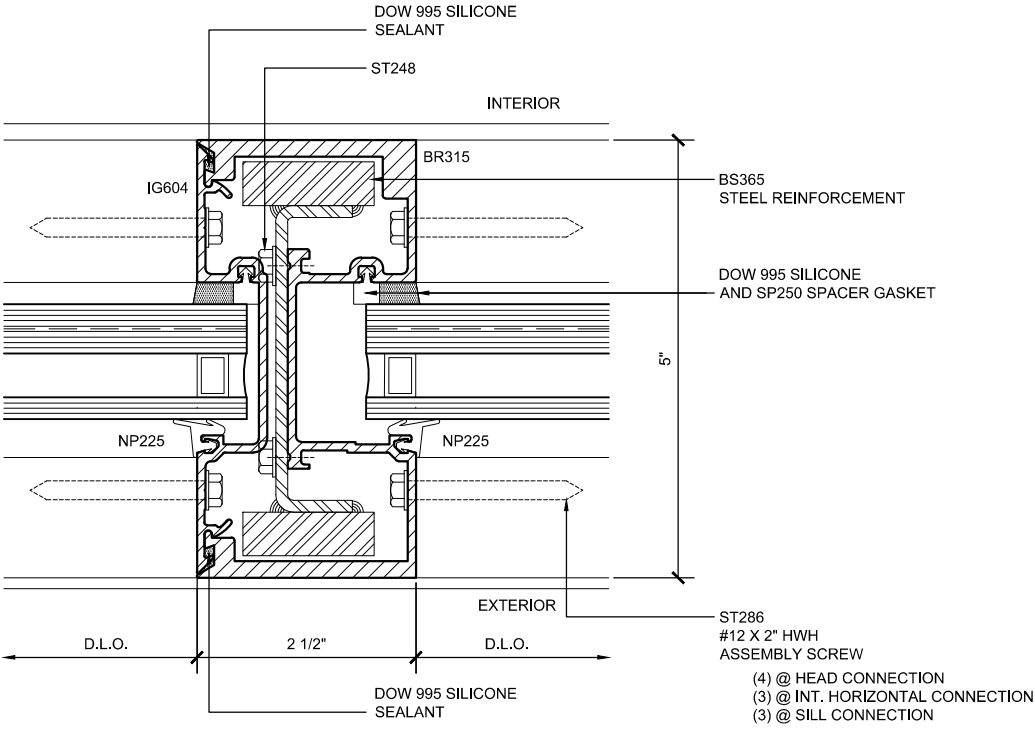
Drawn By: RPD
Date: 03/27/15
Scale: AS NOTED
File Name: BR606.dwg
Sheet

2.03A

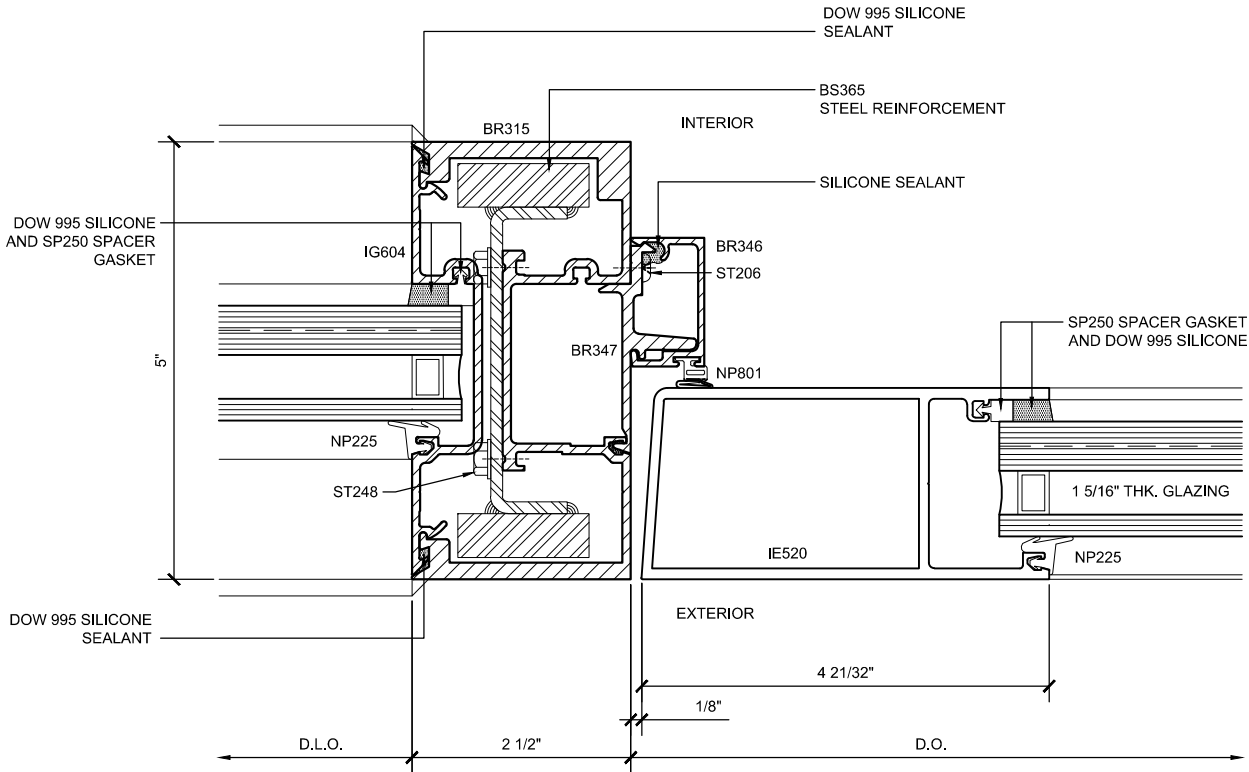
U.S. ALUMINUM BLAST RESISTANT STOREFRONT SERIES BR606 SYSTEM



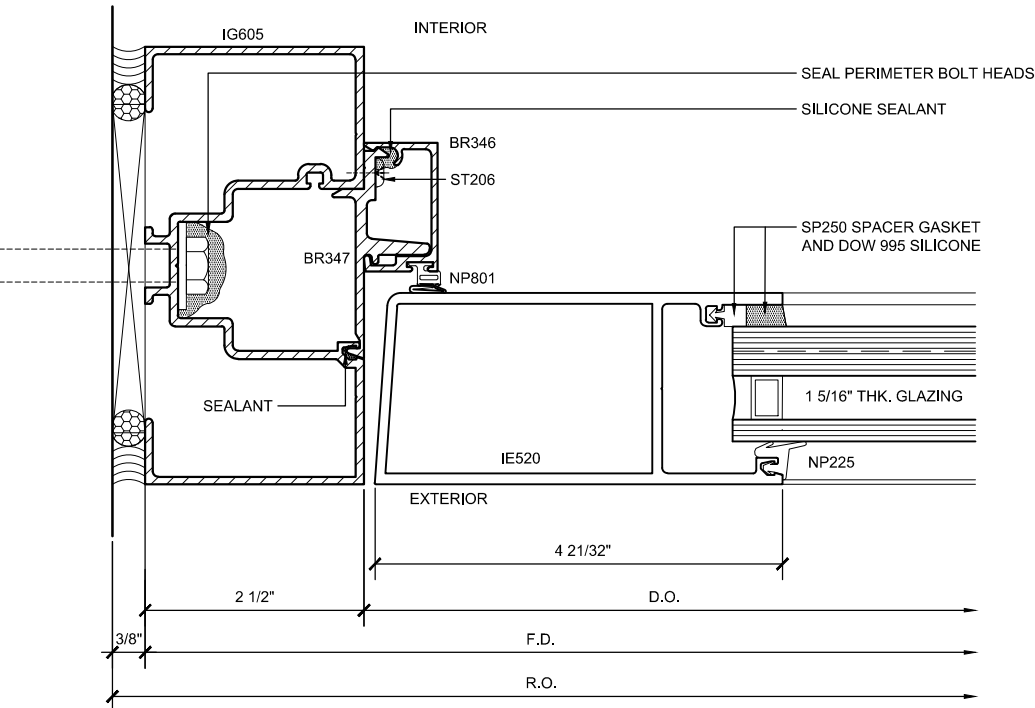
JAMB DETAIL 7
BR606 1'-0"=1'-0"



INT. VERT. DETAIL 8
BR606 1'-0"=1'-0"



DOOR JAMB DETAIL 9
BR606 1'-0"=1'-0"



DOOR / WALL JAMB DETAIL 10
BR606 1'-0"=1'-0"

DEFENDER SERIES BR606 - SYSTEM DETAILS

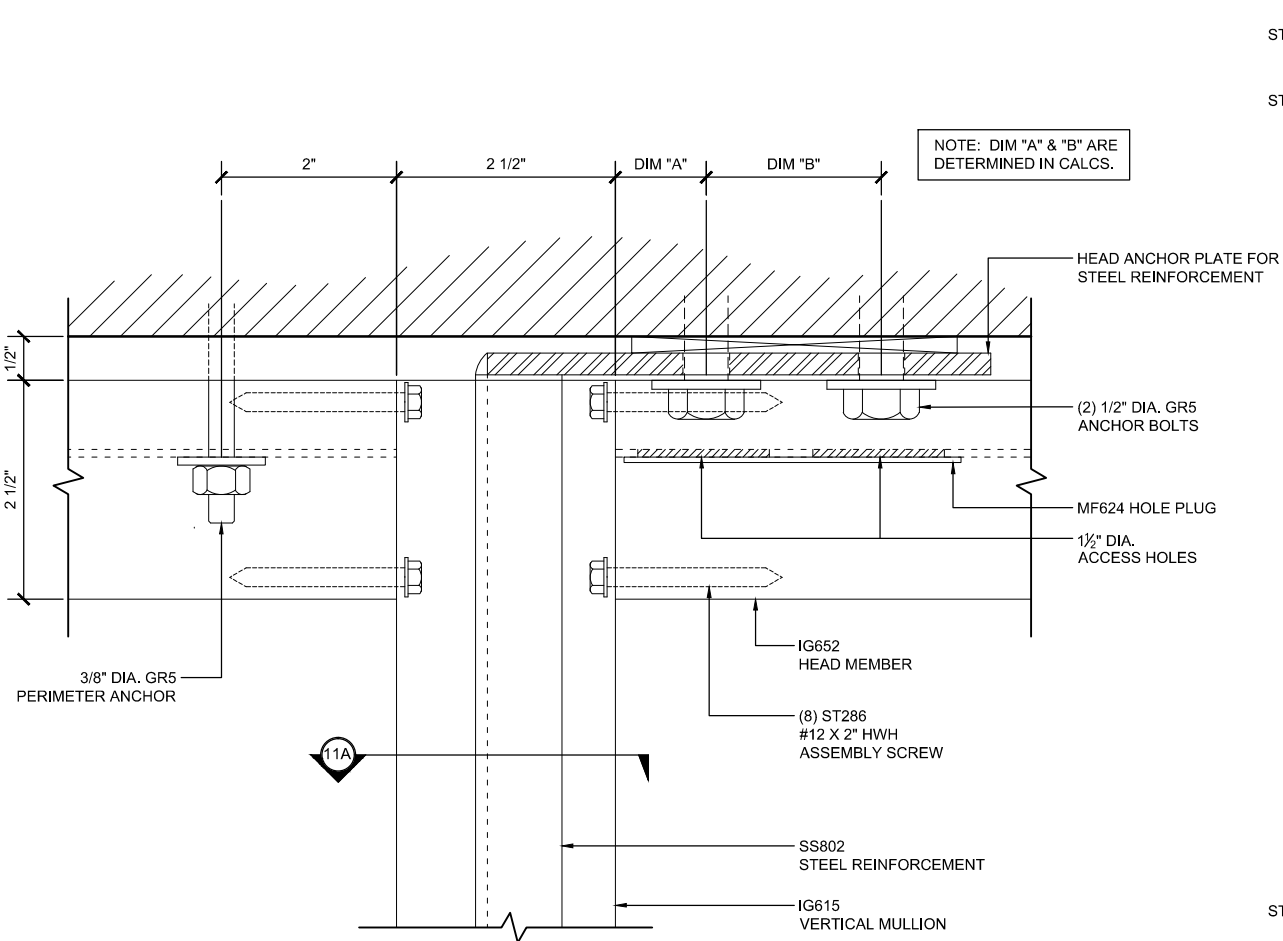
Revisions By:

U.S. ALUMINUM
C.R. LAURENCE CO. ARCHITECTURAL PRODUCTS
2503 E. Vernon Avenue, Los Angeles, CA 90058-1897
PH (800) 421-6144 FAX (800) 587-7201 www.crlaurence.com

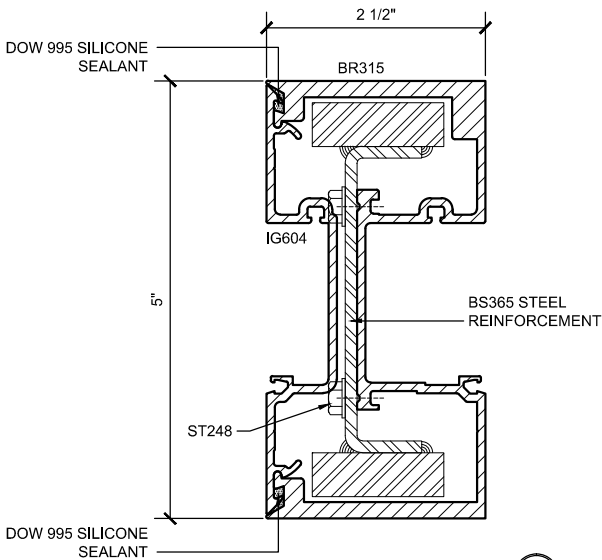
U.S. ALUMINUM
BLAST RESISTANT STOREFRONTS
DEFENDER SERIES BR606
SYSTEM DRAWINGS

Drawn By: RPD
Date: 03/27/15
Scale: AS NOTED
File Name: BR606.dwg
Sheet

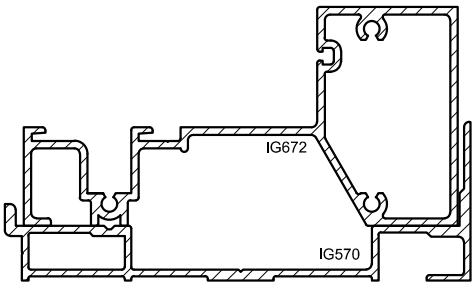
U.S. ALUMINUM BLAST RESISTANT STOREFRONT SERIES BR606 SYSTEM



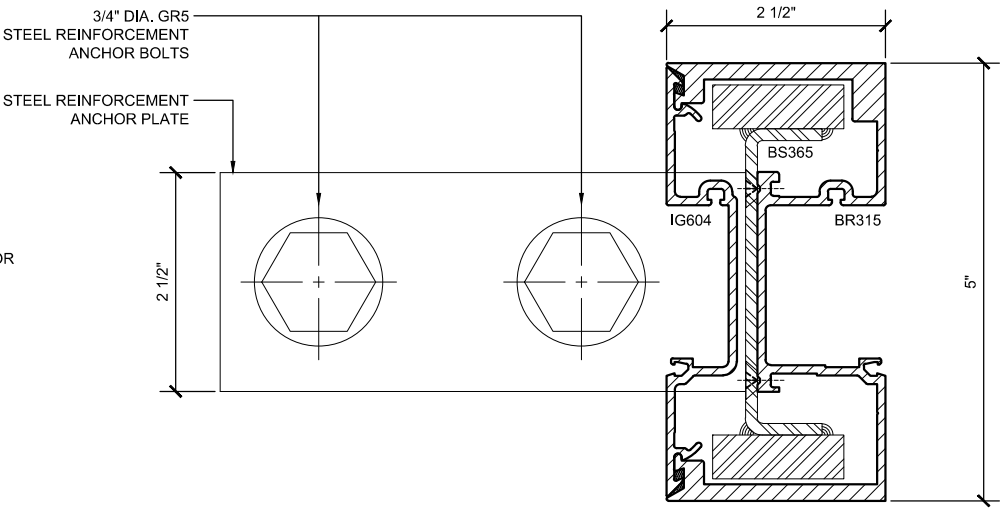
HEAD ELEV. VIEW 11
BR606 1'-0"=1'-0"



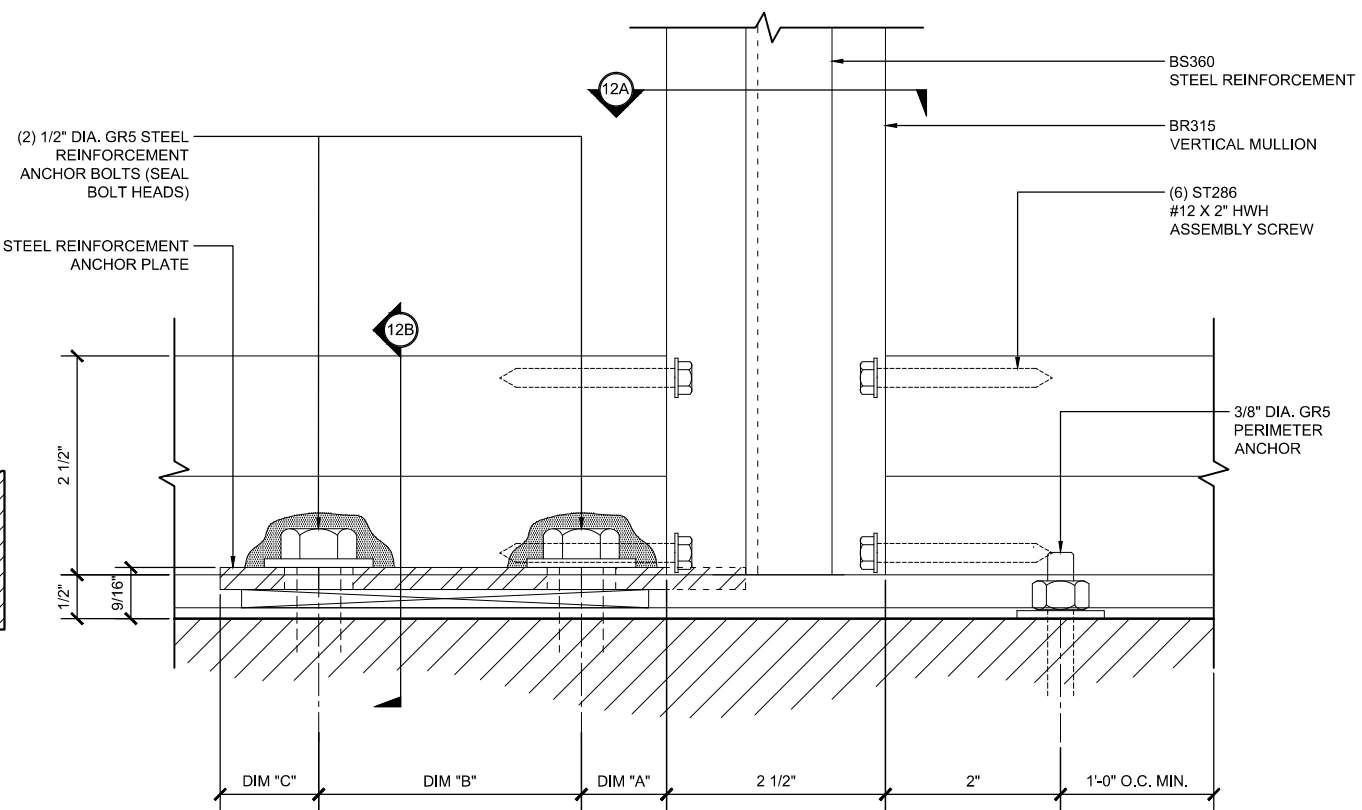
VERT. PLAN DETAIL 11A
BR606 1'-0"=1'-0"



SECTION DETAIL 12B
BR606 1'-0"=1'-0"



VERT. PLAN DETAIL 12A
BR606 1'-0"=1'-0"



SILL ELEV. VIEW 12
BR606 1'-0"=1'-0"

DEFENDER SERIES BR606 - SYSTEM DETAILS

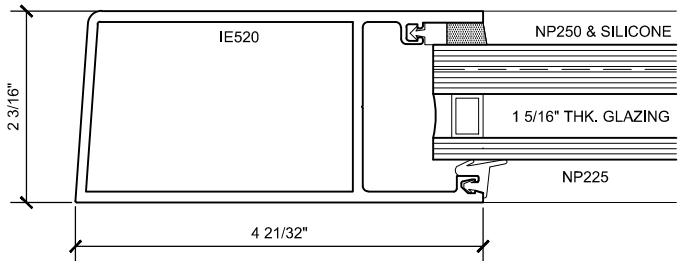
Revisions By:

U.S. ALUMINUM
C.R. LAURENCE CO. ARCHITECTURAL PRODUCTS
2503 E. Venton Avenue, Los Angeles, CA 90058-1897
PH (800) 421-6144 FX (800) 587-7201 www.crlaurence.com

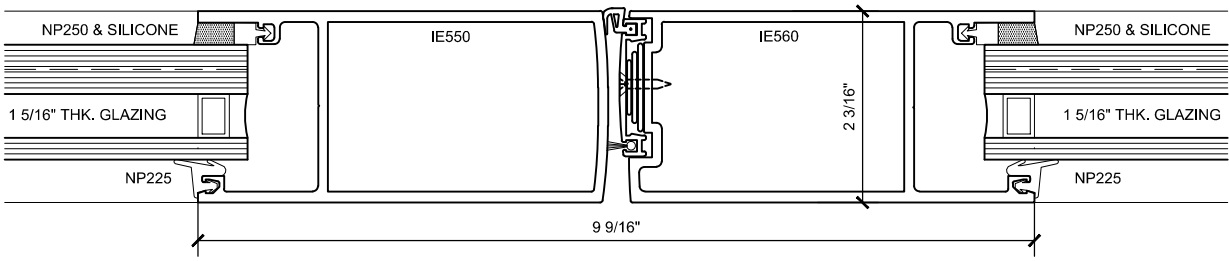
Discription:
U.S. ALUMINUM
BLAST RESISTANT STOREFRONTS
DEFENDER SERIES BR606
SYSTEM DRAWINGS

Drawn By: RPD
Date: 03/27/15
Scale: AS NOTED
File Name: BR606.dwg
Sheet

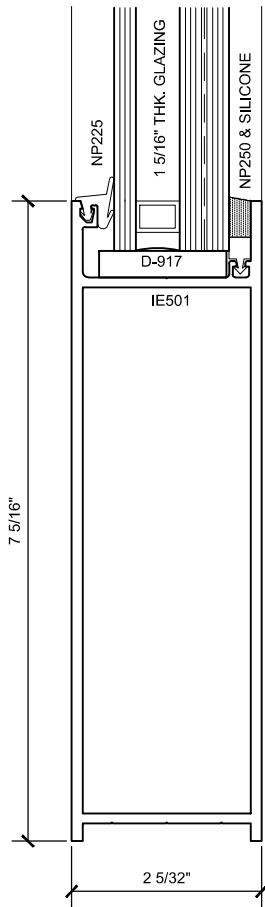
U.S. ALUMINUM BLAST RESISTANT STOREFRONT SERIES BR606 SYSTEM



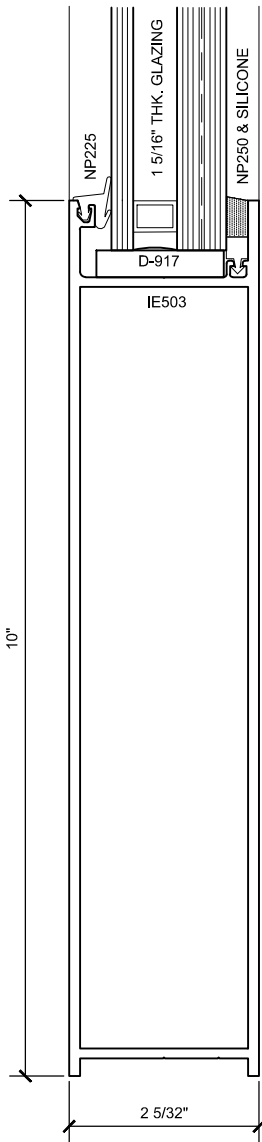
HINGE STILE (13)
BR606 1'-0"=1'-0"



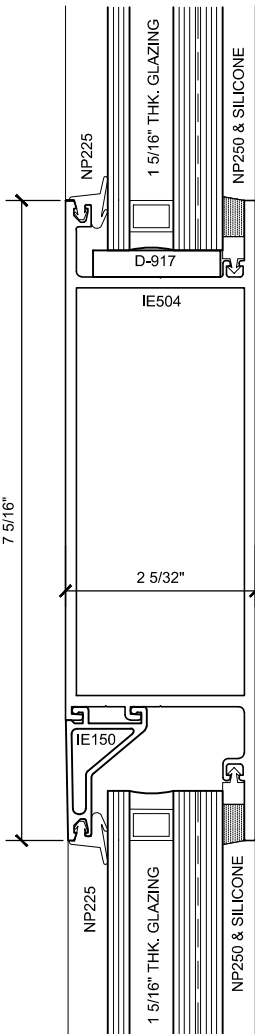
MEETING STILES (14)
BR606 1'-0"=1'-0"



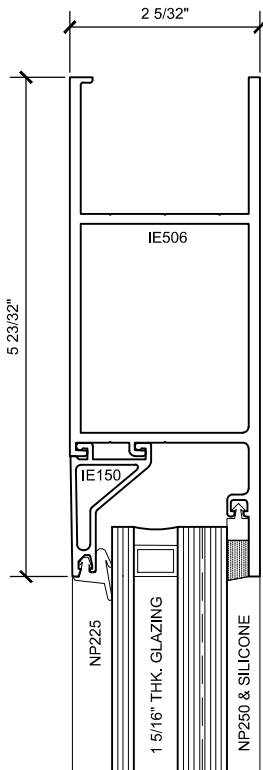
7 in. BOT. RAIL (15)
BR606 1'-0"=1'-0"



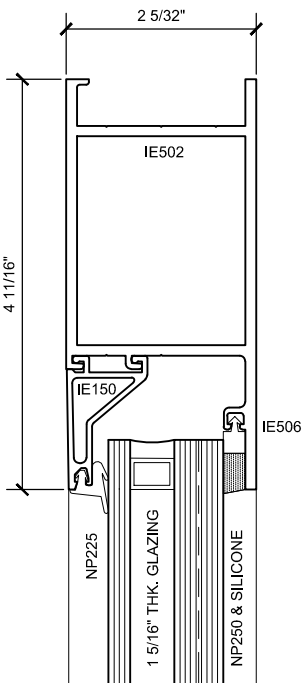
10 in. BOT. RAIL (16)
BR606 1'-0"=1'-0"



MUNTIN (17)
BR606 1'-0"=1'-0"



TOP RAIL CONC. CLOSER (18)
BR606 1'-0"=1'-0"



TOP RAIL SURF. CLOSER (19)
BR606 1'-0"=1'-0"

DEFENDER SERIES BR606 - SYSTEM DETAILS

Revisions By:

CAL ALUMINUM
C.R. LAURENCE CO. ARCHITECTURAL PRODUCTS
2503 E. Vinton Avenue, Los Angeles, CA 90058-1897
PH (800) 421-6144 FX (800) 587-7201 www.crlaurence.com

Description:
U.S. ALUMINUM
BLAST RESISTANT STOREFRONTS
DEFENDER SERIES BR606
SYSTEM DRAWINGS

Drawn By: RPD
Date: 03/27/15
Scale: AS NOTED
File Name: BR606.dwg
Sheet