

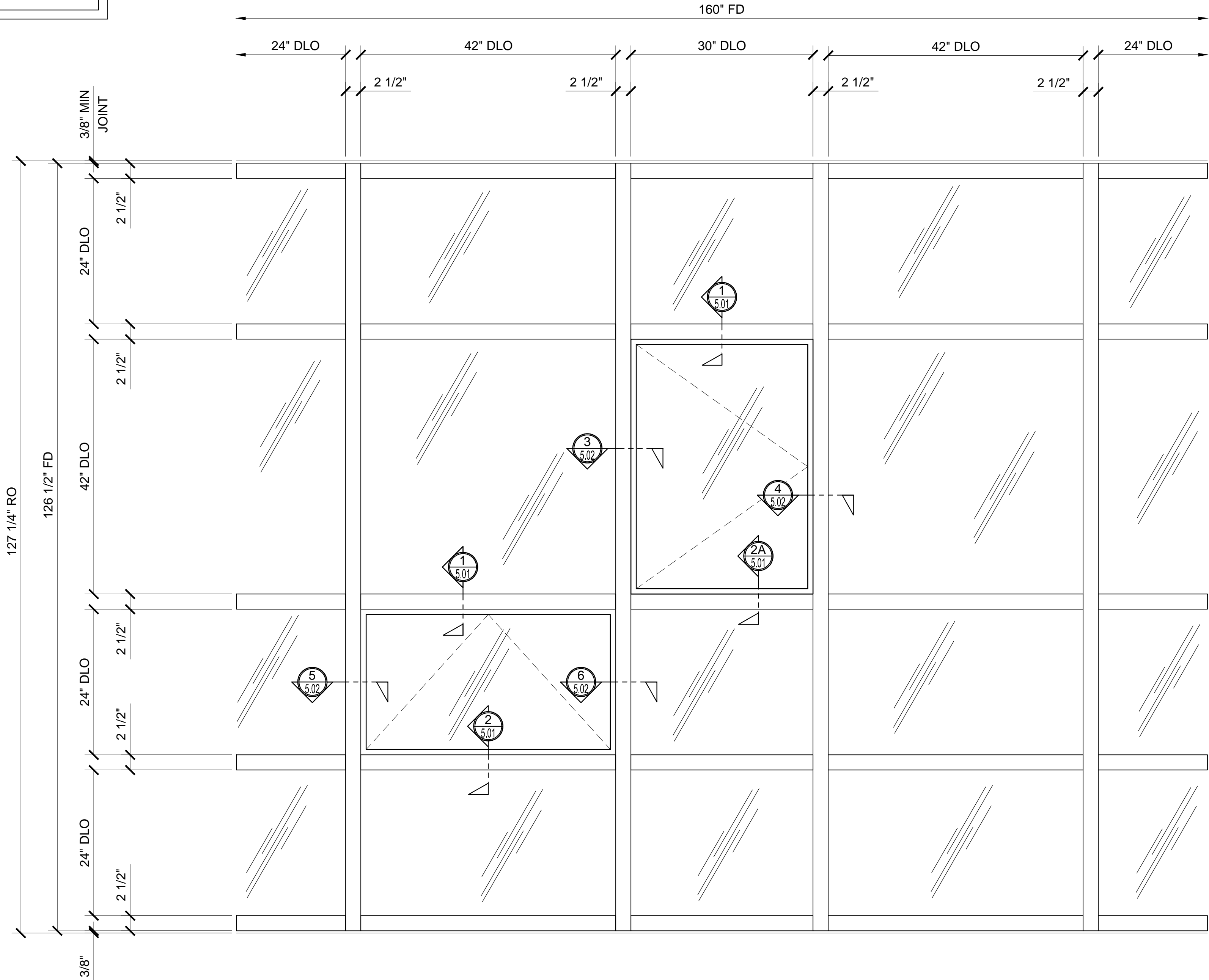


STORM FRONT

HURRICANE RESISTANT CONCEALED VENT WINDOW - IW7600 SERIES

GLASS SIZING NOTE:
REFERENCE U.S. ALUMINUM
CATALOGS AND WEBSITE'S
LOAD CHARTS FOR SIZING
GUIDELINES.

1" = 1'-0"



IW7600 SERIES SPECIFICATIONS

The Series IW7600 Concealed Vent is a minimal sightline window perfect for use in Storefront, Ribbon Window, and Curtain Wall openings. Standard hardware includes a single Multi-Point Locking Handle. As with all of our operable windows, vent construction starts with tubular vent components that are mitered, reinforced with corner keys, and crimped at all corners. When closed, the vent is sealed to the frame with bulb gaskets ensuring an air tight seal. The high performance IW7600 Window meets the stringent requirements of the Miami/Dade County protocol for maximum protection from high winds and wind-borne debris.

- 2 3/16" x 2 3/16" frame
- AAMA CW 100-Rated
- Accepts 1-3/16 (30) Glazing
- Minimum Sightline
- Structural Silicone Glazed
- Euro Multi-Point Locking Handles
- Use With Storefront or Curtain Wall
- Thermally Broken
- U-Factor 0.56 to 0.34
- Reinforced Corner Construction

STANDARD ABBREVIATIONS

- | | |
|------|---------------------------|
| RO | ROUGH OPENING |
| FD | FRAME DIMENSION |
| DLO | DAYLIGHT OPENING |
| DO | DOOR OPENING |
| DD | DOOR DIMENSION |
| SMC | SURFACE MOUNTED CLOSER |
| OHCC | OVERHEAD CONCEALED CLOSER |

Revisions By:



Discription:
CRL STORM FRONT
HURRICANE RESISTANT
CONCEALED VENT WINDOW
SERIES IW7600
FOR 1-1/32" GLASS

Drawn By: TMG

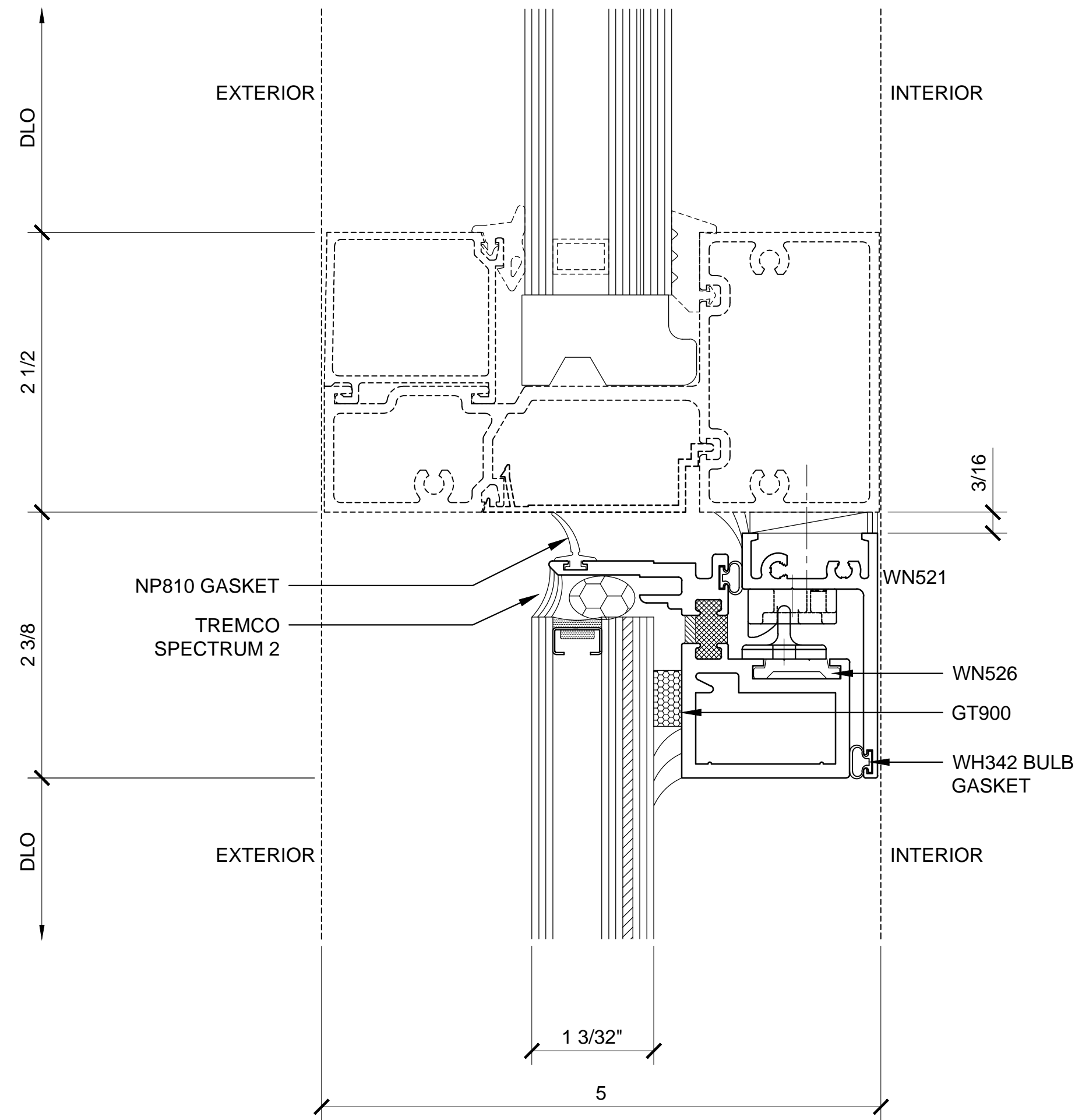
Date: 06/26/15

Scale: AS NOTED

File Name:

IW7600.dwg

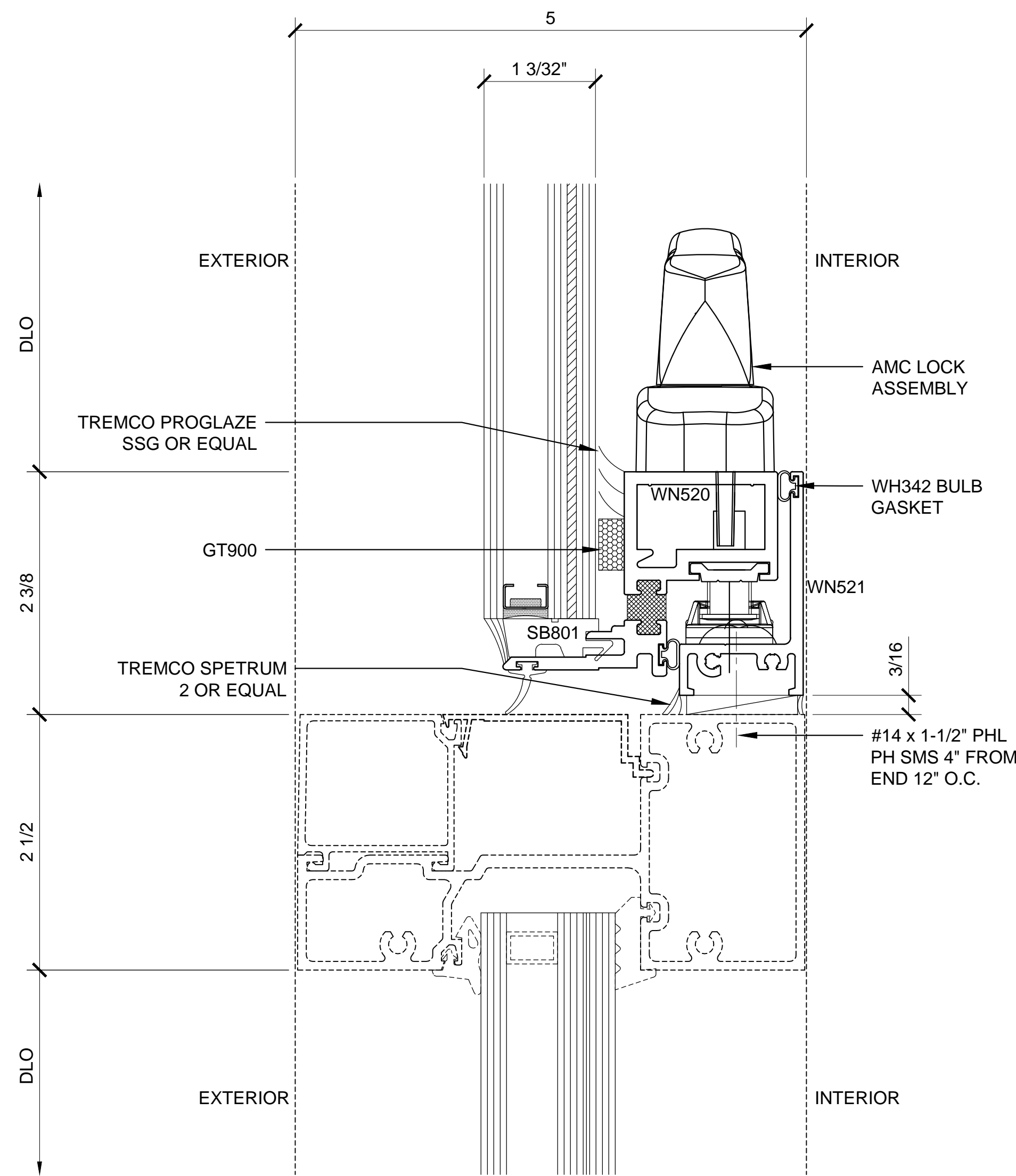
Sheet



① SECTION DETAIL AT HEAD

ARCH REF: N/A

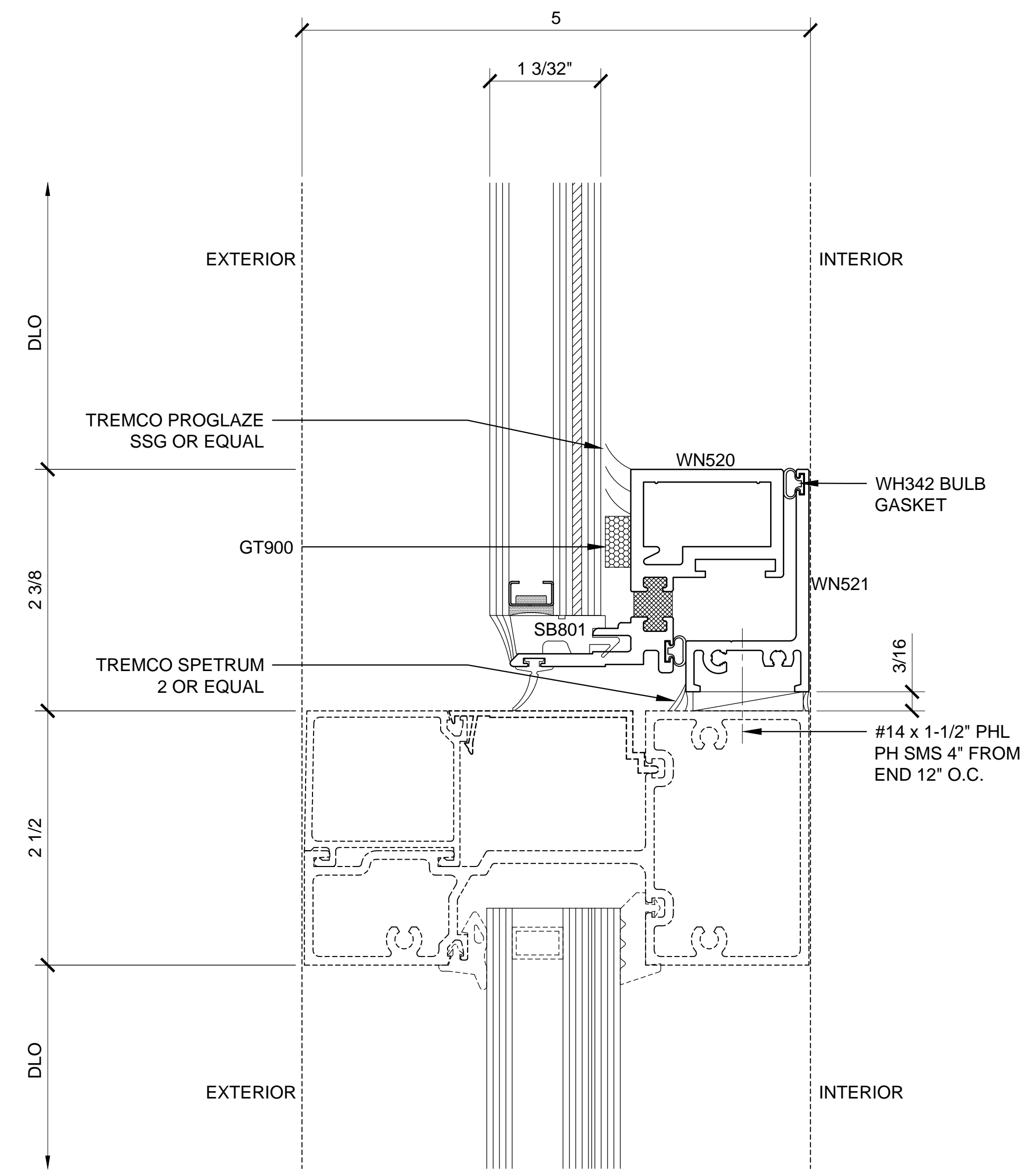
1'-0"=1'-0"



② SECTION DETAIL AT SILL @ AWNING

ARCH REF: N/A

1'-0"=1'-0"



②A SECTION DETAIL AT SILL @ CASEMENT

ARCH REF: N/A

1'-0"=1'-0"

HURRICANE RESISTANT CONCEALED VENT WINDOW - IW7600 SERIES DETAILS (SHOWN WITH STORM FRONT IG600 STOREFRONT)

Revisions By:



C.R. LAURENCE CO. ARCHITECTURAL PRODUCTS
2503 E. Vernon Avenue, Los Angeles, CA 90058-1897
PH (800) 421-6144 FX 800-587-7301 www.crlaurence.com

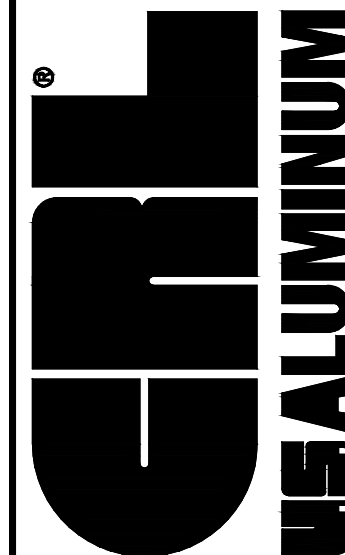
Discription:
CRL STORM FRONT
HURRICANE RESISTANT
CONCEALED VENT WINDOW
SERIES IW7600
FOR 1-1/32" GLASS

Drawn By: TMG
Date: 06/26/15
Scale: AS NOTED
File Name:
IW7600.dwg

Sheet

1.01

Revisions By:



C.R. LAURENCE CO. ARCHITECTURAL PRODUCTS
2503 E. Vernon Avenue, Los Angeles, CA 90058-1897
PH (800) 421-6144 FX 800-587-7301 www.crlaurence.com

Discription:
CRL STORM FRONT
HURRICANE RESISTANT
CONCEALED VENT WINDOW
SERIES IW7600
FOR 1-1/32" GLASS

Drawn By: TMG

Date: 06/26/15

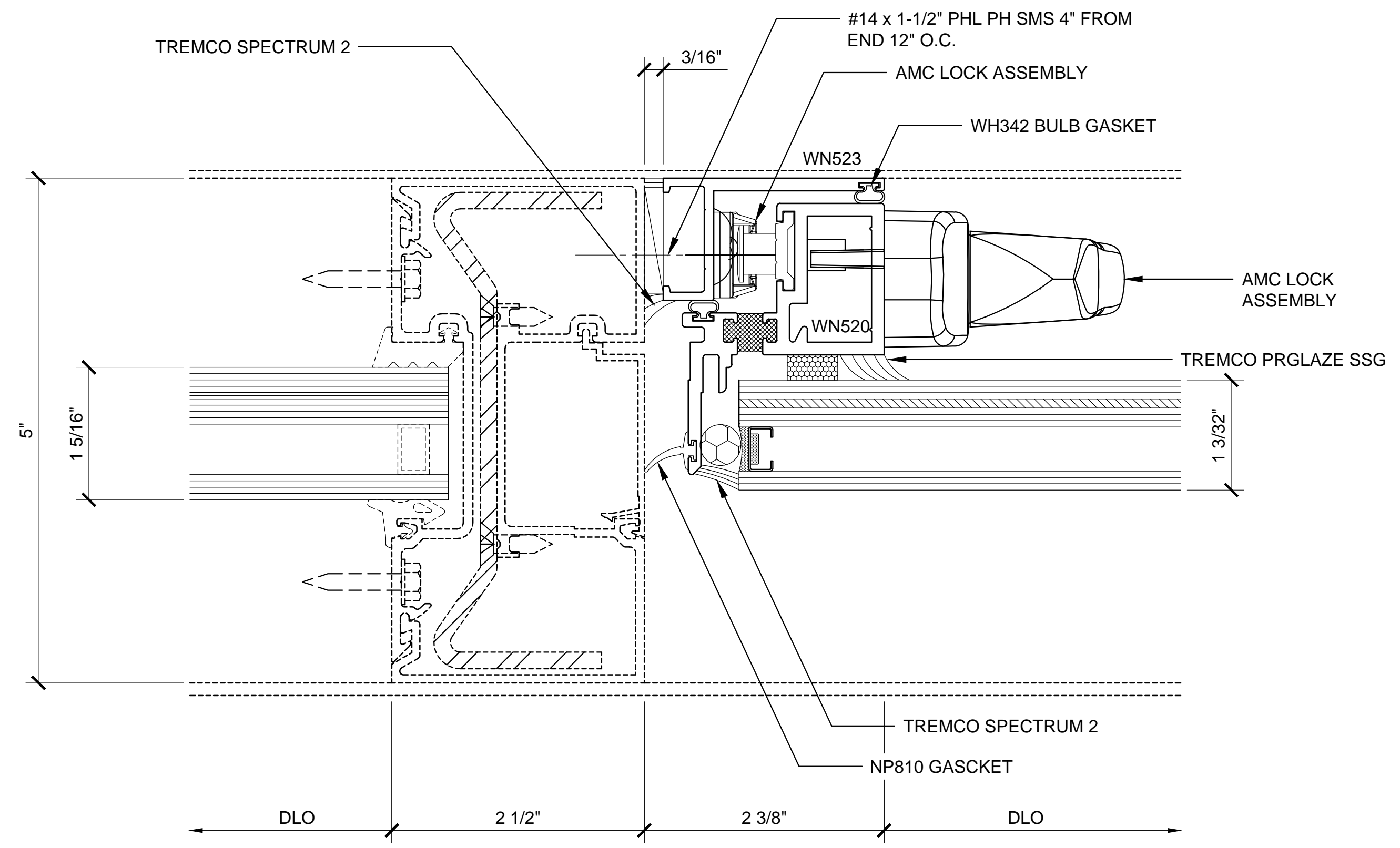
Scale: AS NOTED

File Name:

IW7600.dwg

Sheet

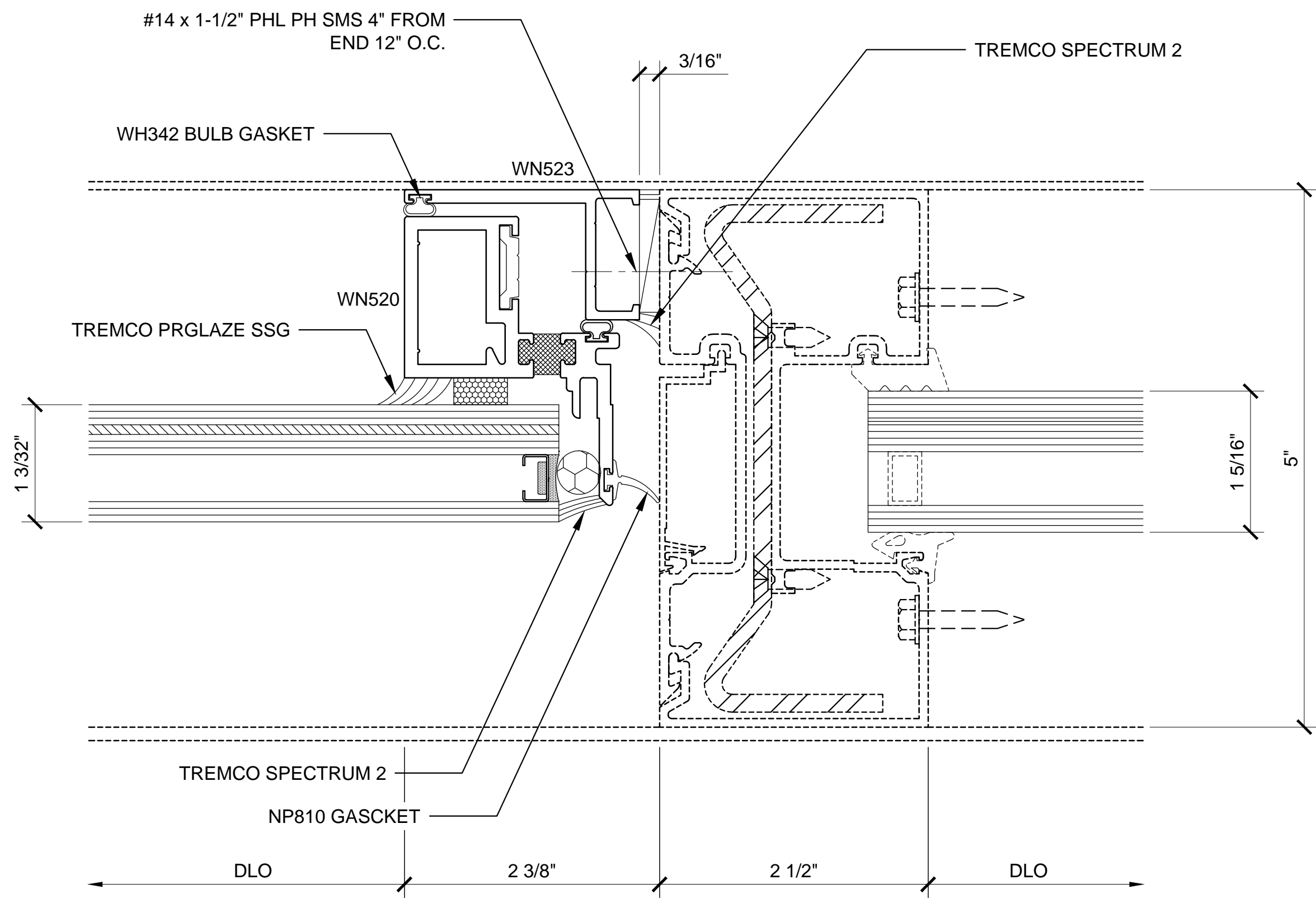
1.02



③ SECTION DETAIL AT JAMB @ CASEMENT

ARCH REF: N/A

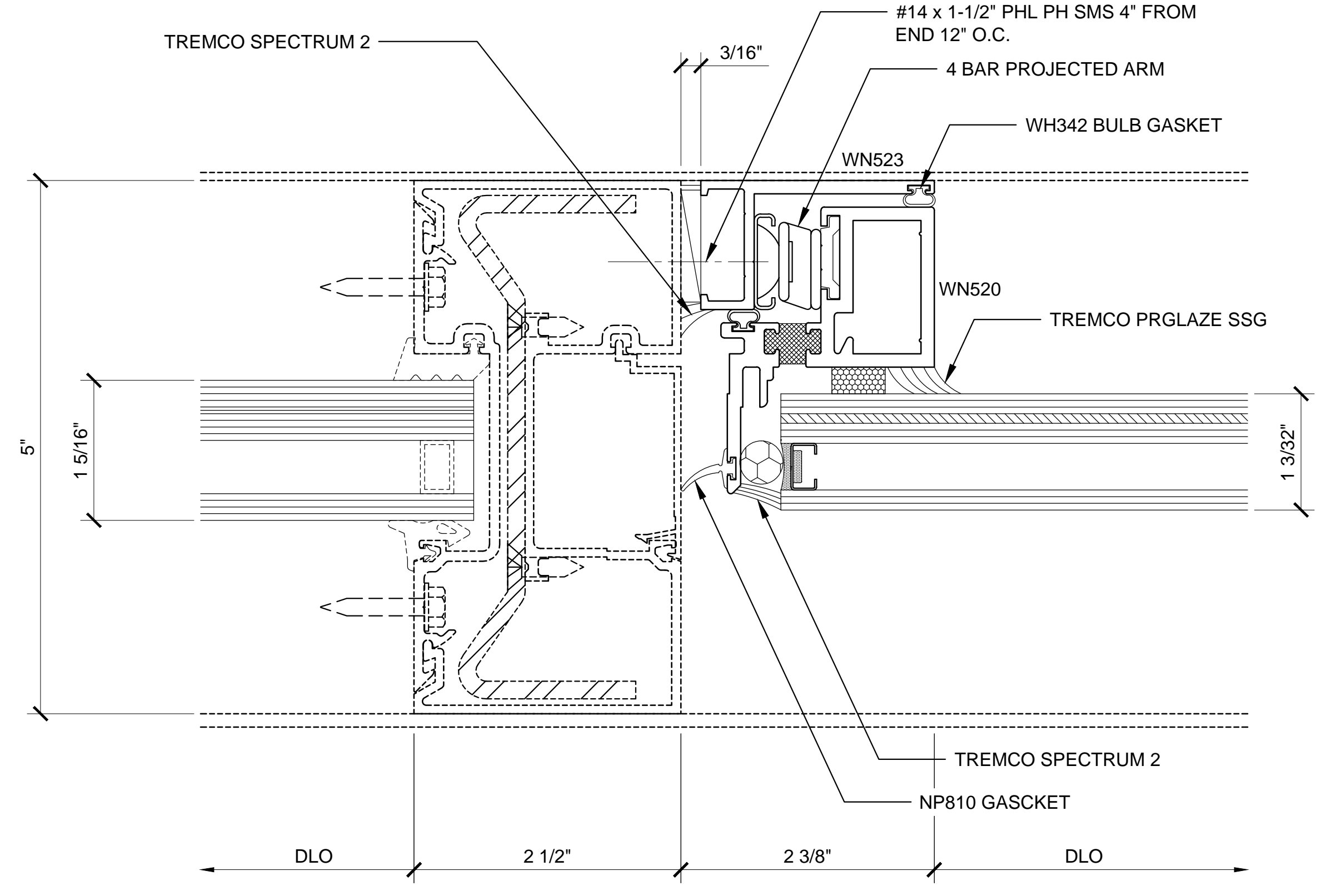
1'-0"=1'-0"



④ SECTION DETAIL AT JAMB @ CASEMENT

ARCH REF: N/A

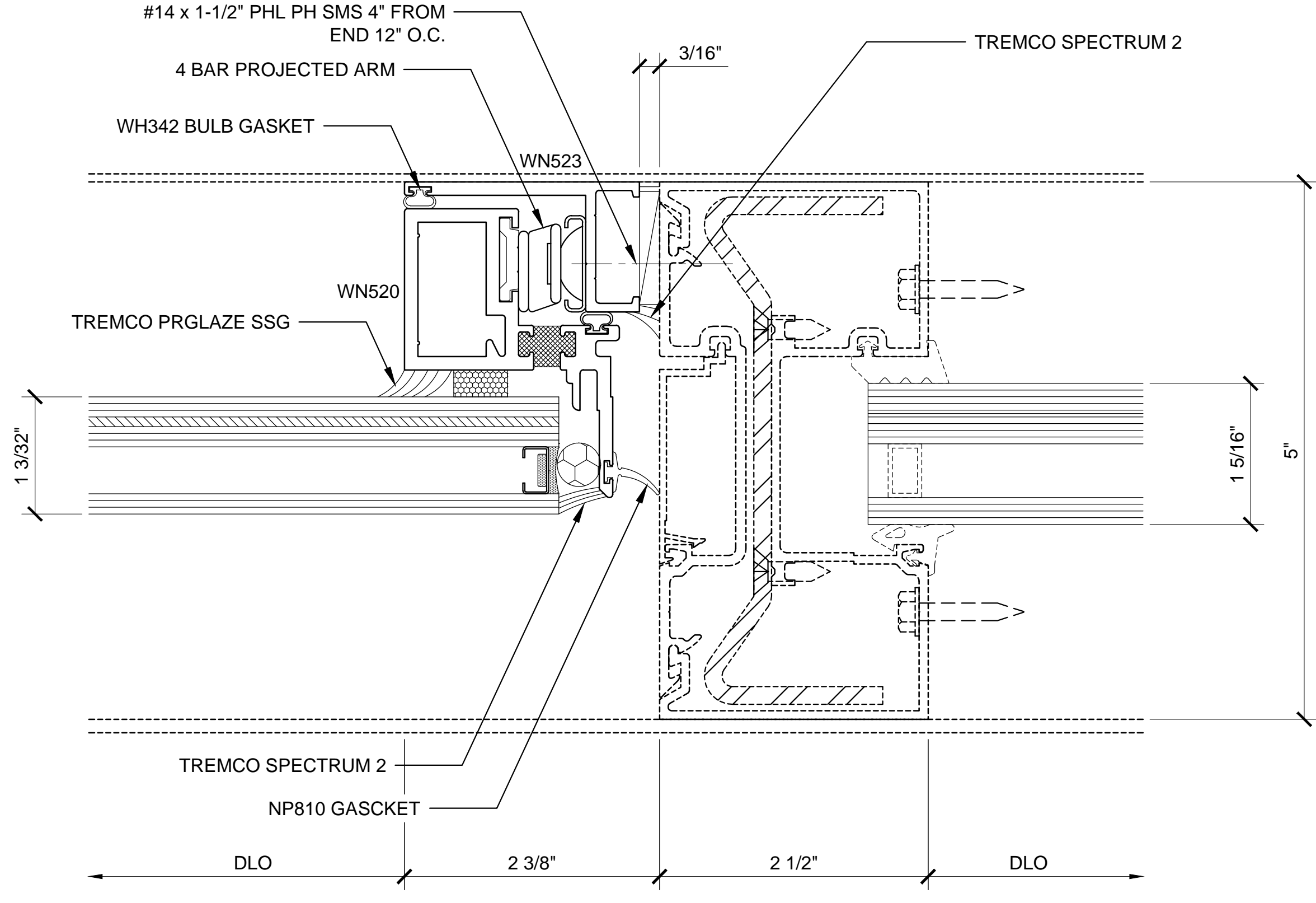
1'-0"=1'-0"



⑤ SECTION DETAIL AT JAMB @ AWNING

ARCH REF: N/A

1'-0"=1'-0"



⑥ SECTION DETAIL AT JAMB @ AWNING

ARCH REF: N/A

1'-0"=1'-0"