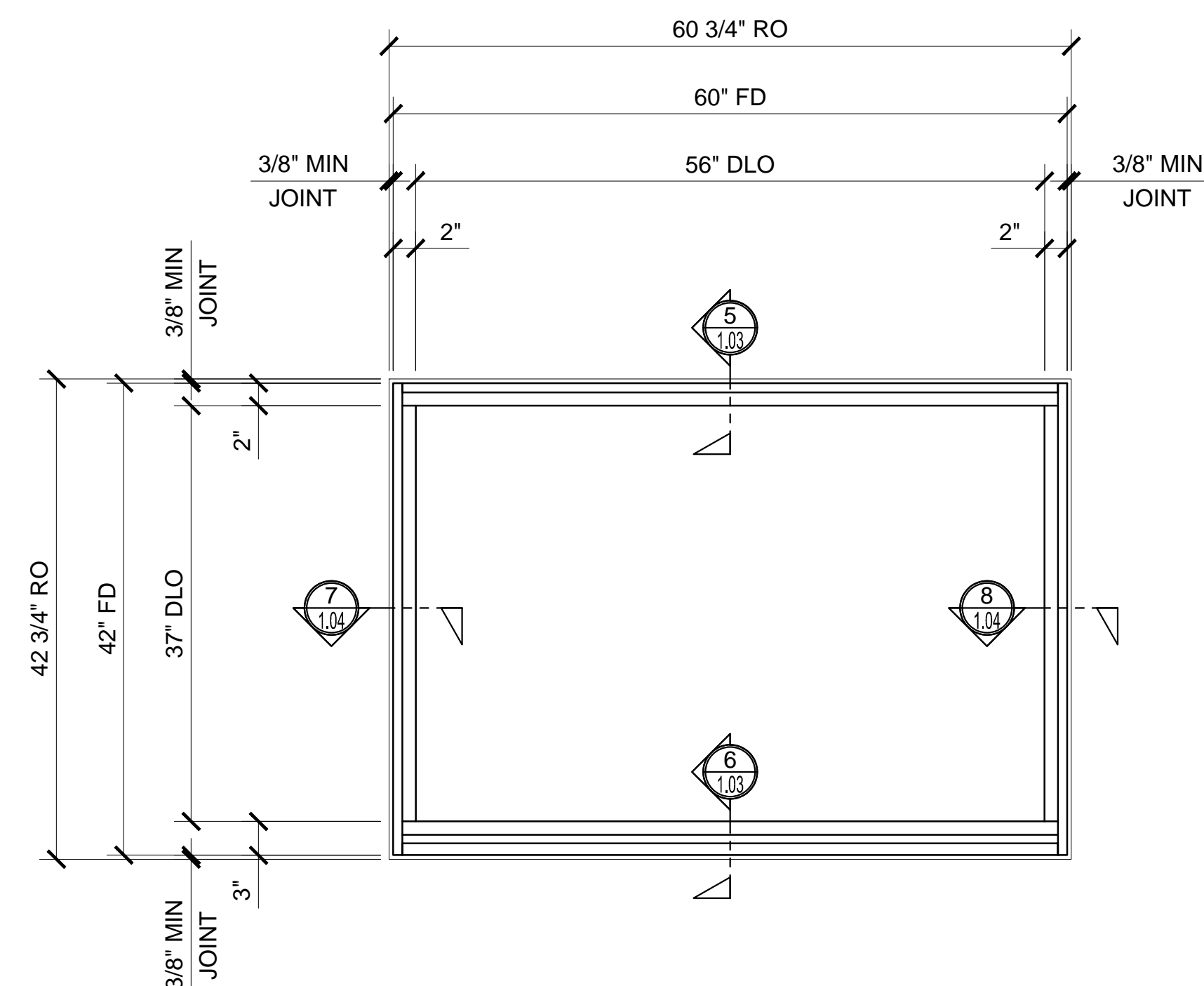



$$1'' = 1'-0''$$

Technical drawing of a window unit showing dimensions and callouts:

- Top dimensions: 60 3/4" RO, 60" FD, 56" DLO.
- Right side dimensions: 3/8" MIN JOINT, 2".
- Left side dimensions: 42 3/4" RO, 42" FD, 37" DLO, 3/8" MIN JOINT, 2".
- Bottom dimensions: 3/8" MIN JOINT, 3".
- Callouts: 1 101 (top center), 2 101 (bottom center), 3 102 (left side), 4 102 (right side).

SERIES IW8100 FIXED WINDOW ELEVATION - BLOCK INSTALL



SERIES IW8100 FIXED WINDOW ELEVATION - FIN INSTALL

4 1/2" (114) Deep Frame to Match Typical Building Conditions
Tested to AAMA CW60
Accepts 1-7/32" (31) Glazing
Thermally Insulated - NFRC Certified
U-Factor as low as 0.34
Choice of Block or Fin Frame
Accessories Such as Mulling Bars, Subsills, Head and Jamb Channels are Available
Available in an Array of Architectural Coatings and Anodized Finishes

RO	ROUGH OPENING
FD	FRAME DIMENSION
DLO	DAYLIGHT OPENING
DO	DOOR OPENING
DD	DOOR DIMENSION
SMC	SURFACE MOUNTED CLOSER
OHCC	OVERHEAD CONCEALED CLOSER

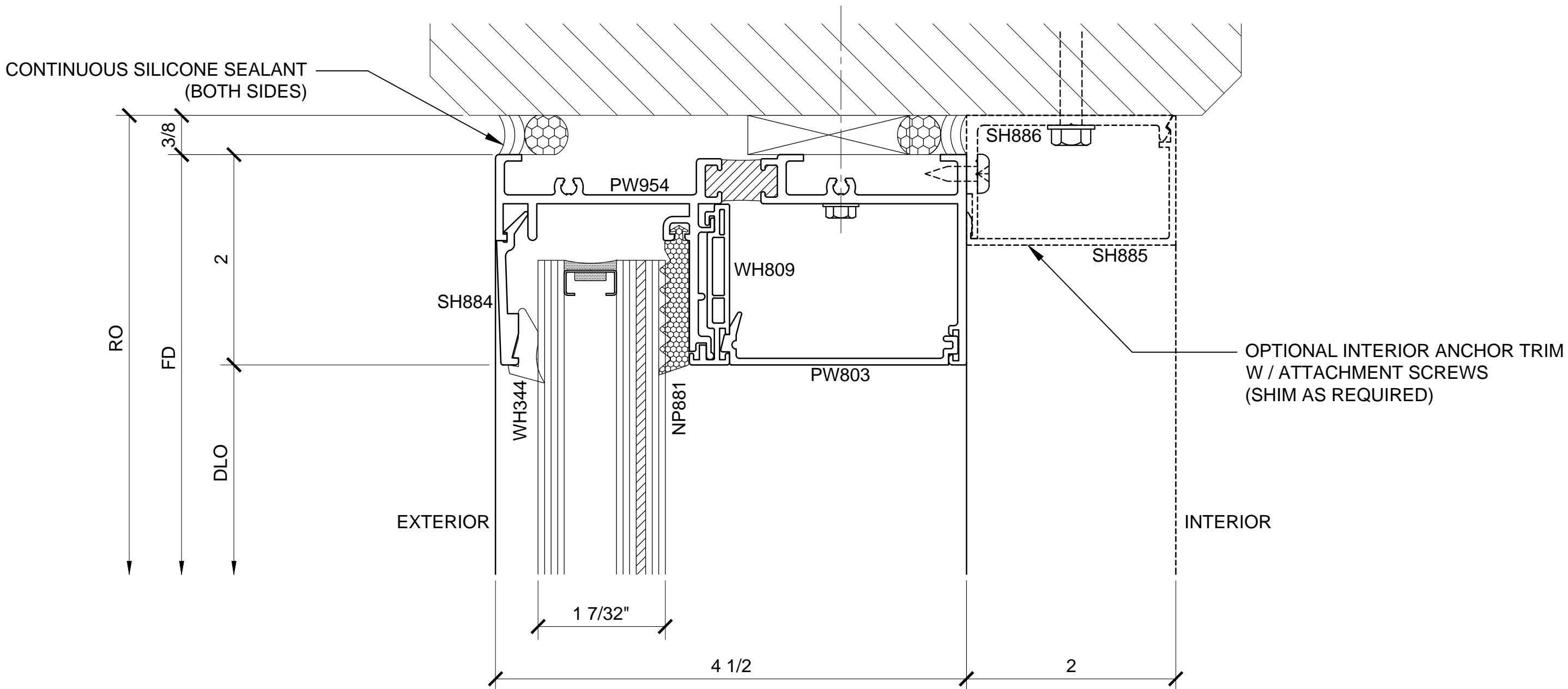
CAL[®]
US ALUMINUM

C.R. LAURENCE CO. ARCHITECTURAL PRODUCTS
2938 E. Vermont Avenue, Los Angeles, CA 90058-1897
PH (800) 421-6144 FX: 800-597-7501 www.claluminum.com

Description:
 CRL STORM FRONT
 HURRICANE RESISTANT
 FIXED WINDOW
 SERIES IW8100
 FOR 1-7/32" GLASS

Sheet

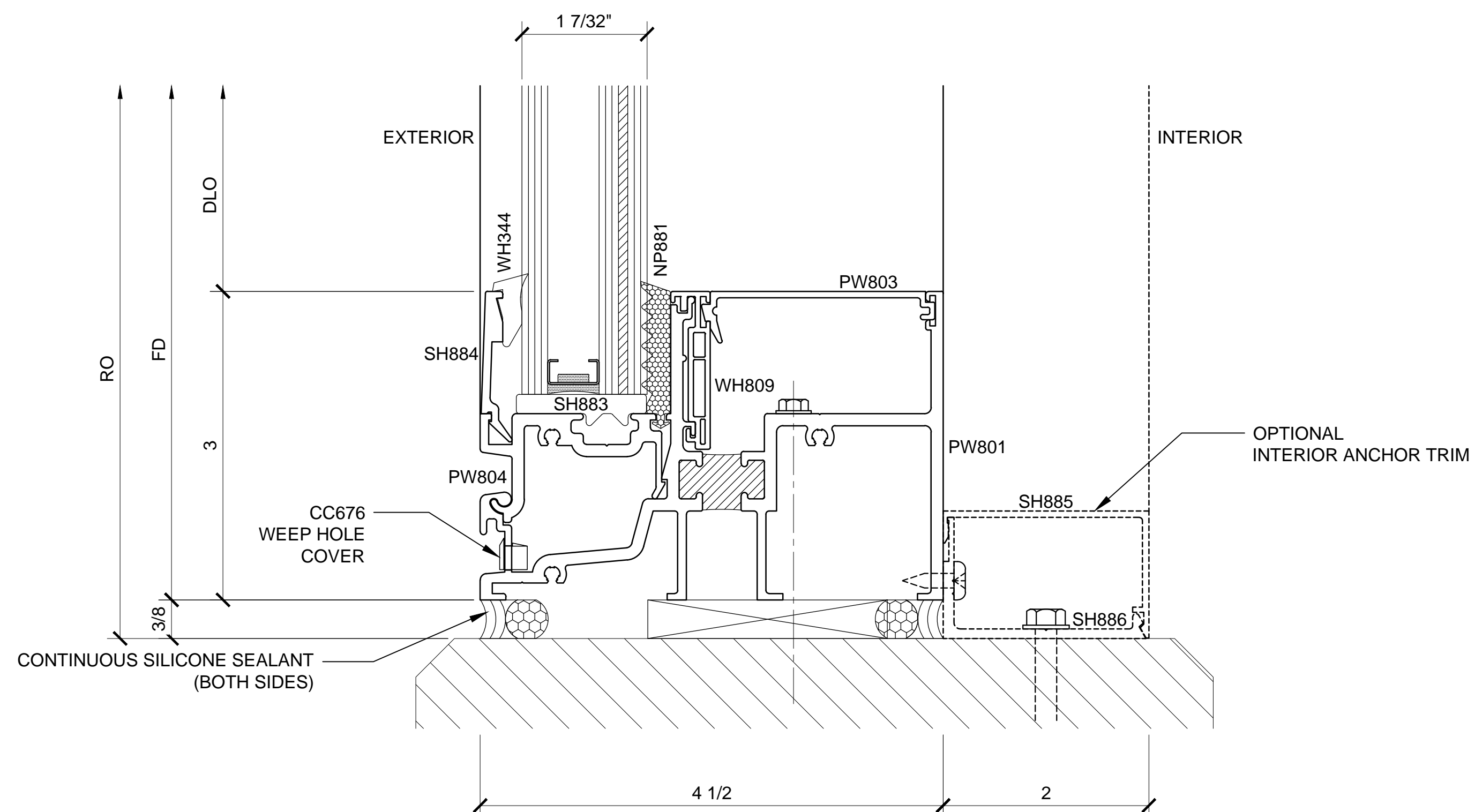
Sheet



1 SECTION DETAIL AT HEAD

ARCH REF: N/A

1'-0"=1'-0"



2 SECTION DETAIL AT SILL

ARCH REF: N/A

1'-0"=1'-0"

Revisions By:

CRL
ALUMINUM
C.R. LAURENCE CO. ARCHITECTURAL PRODUCTS
2503 E. Vernon Avenue, Los Angeles, CA 90058-1897
PH (800) 421-6144 FX 800-587-7301 www.crlaurence.com

Description:
CRL STORM FRONT
HURRICANE RESISTANT
FIXED WINDOW
SERIES IW8100
FOR 1-7/32" GLASS

Drawn By: TMG

Date: 06/26/15

Scale: AS NOTED

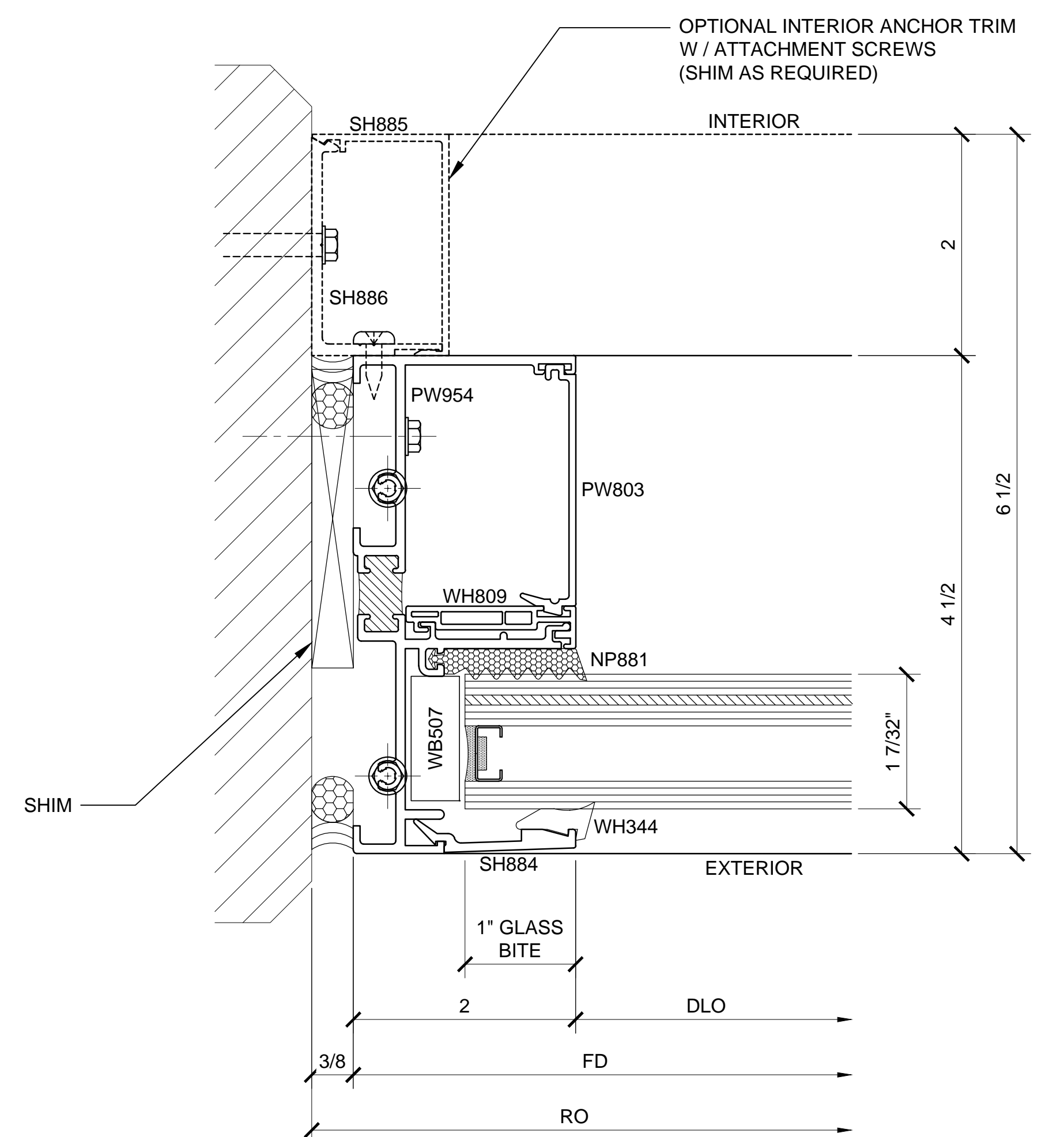
File Name:

IW8100.dwg

Sheet

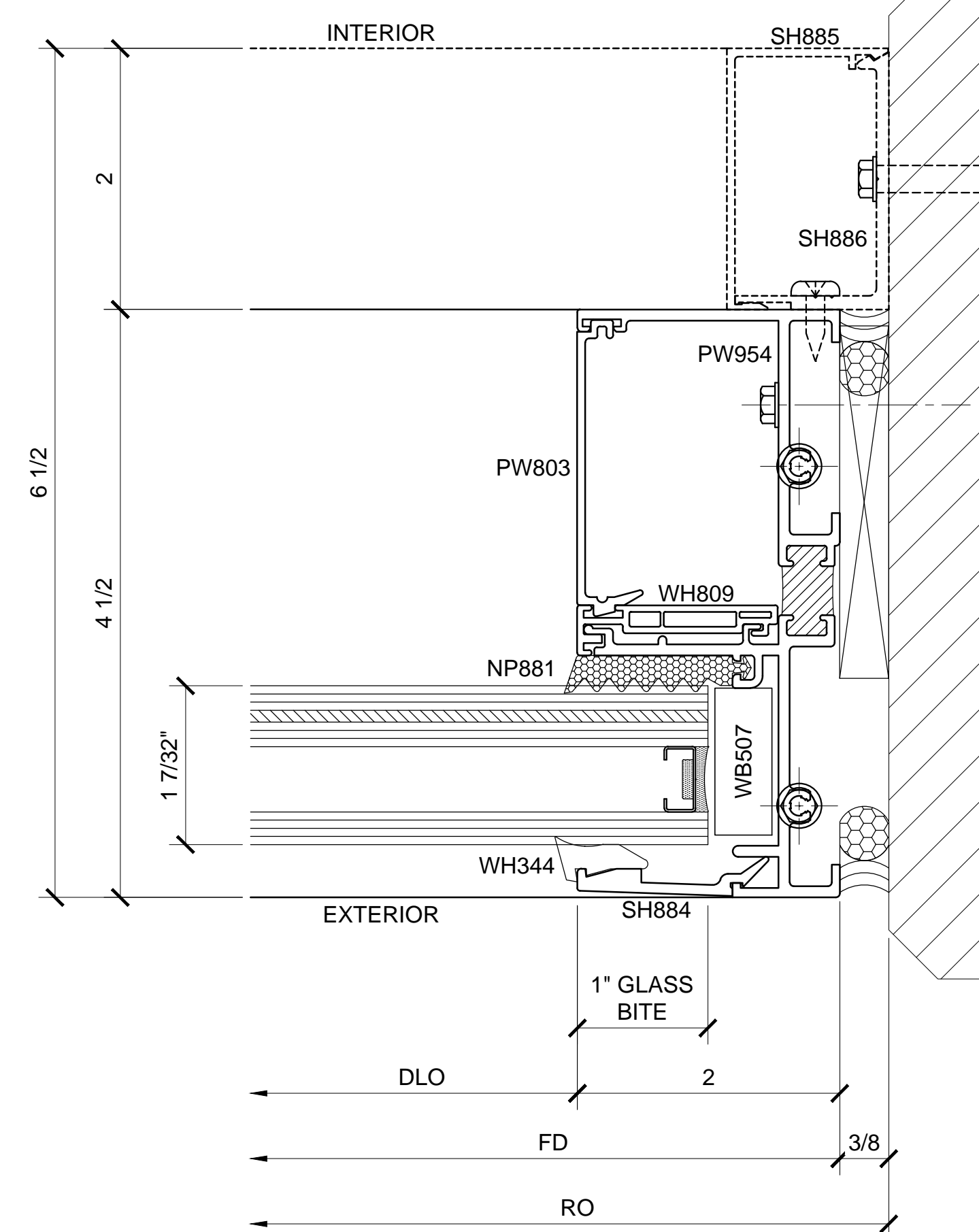
1.01

HURRICANE RESISTANT FIXED WINDOW - IW8100 SERIES DETAILS - BLOCK INSTALL



③ SECTION DETAIL AT JAMB

ARCH REF: N/A

$$1'-0''=1'-0''$$


④ SECTION DETAIL AT JAMB

ARCH REF: N/A

$$1'-0''=1'-0''$$

Revisions By:



ALUMINUM
C.R. LAURENCE CO. ARCHITECTURAL PRODUCTS
2503 E. Vernon Avenue, Los Angeles, C.A. 90058-1897
PH (800)-421-6144 FX: 800-587-7501 www.crlaurence.com

Description:
CRL STORM FRONT
HURRICANE RESISTANT
FIXED WINDOW
SERIES IW8100
FOR 1-7/32" GLASS

Drawn By: TMG

Date: 06/26/15

Scale: AS NOTED

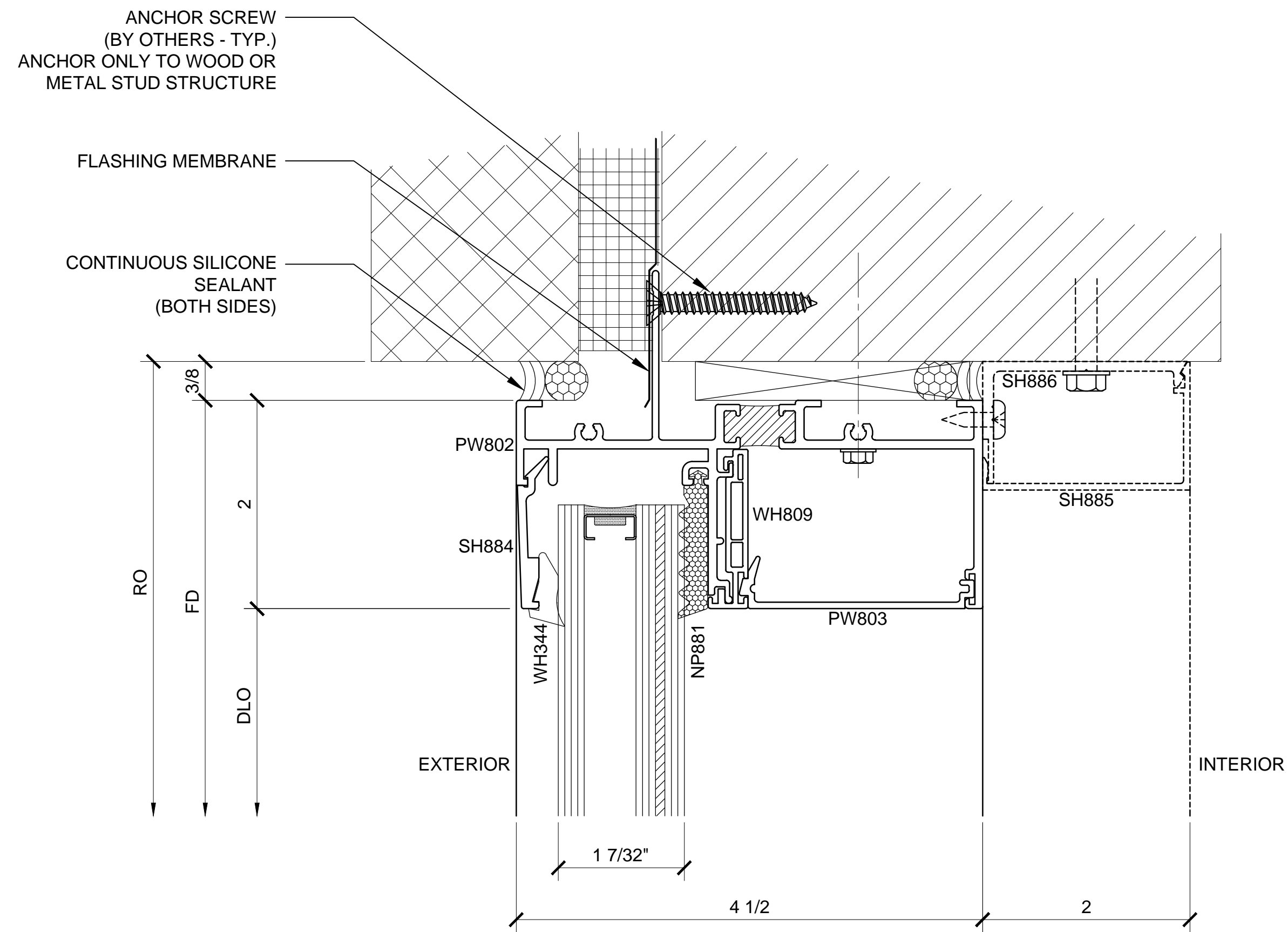
File Name:

IW8100.dwg

Sheet

HURRICANE RESISTANT FIXED WINDOW - IW8100 SERIES DETAILS - BLOCK INSTALL

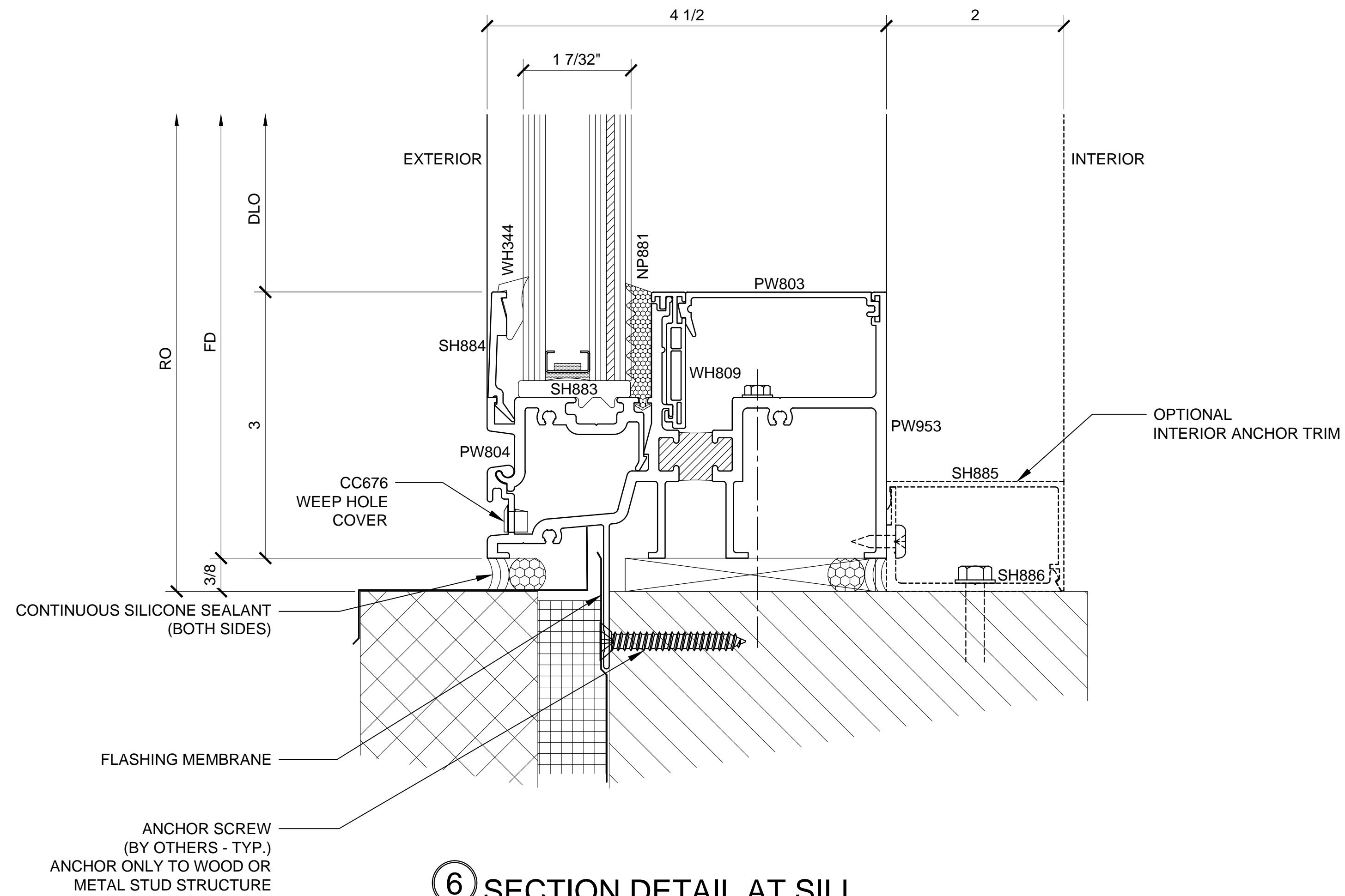
1.02



⑤ SECTION DETAIL AT HEAD

ARCH REF: N/A

1'-0"=1'-0"



⑥ SECTION DETAIL AT SILL

ARCH REF: N/A

1'-0"=1'-0"

HURRICANE RESISTANT FIXED WINDOW - IW8100 SERIES DETAILS - FIN FRAME INSTALLED

Revisions By:

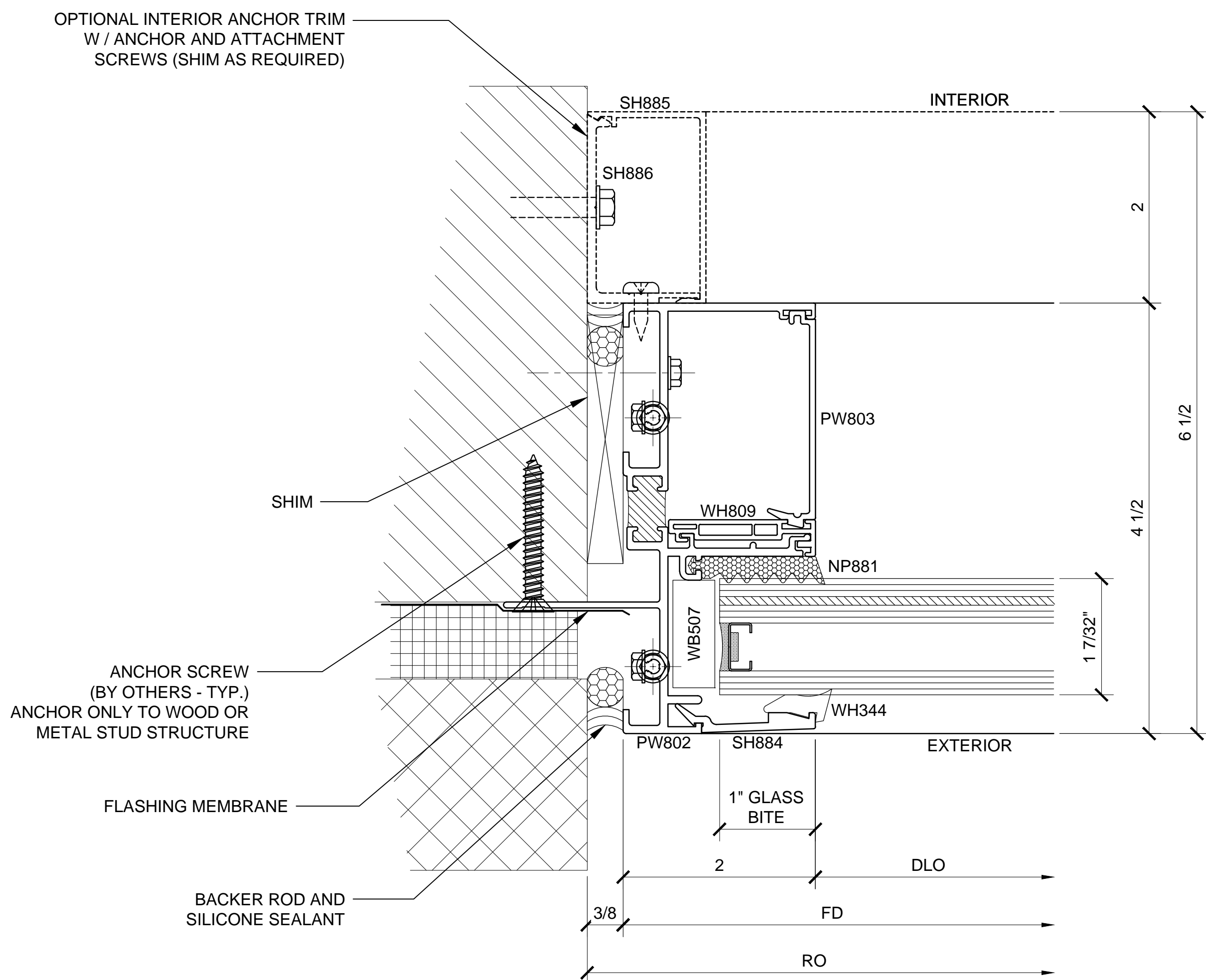
CRL
ALUMINUM
 C.R. LAURENCE CO. ARCHITECTURAL PRODUCTS
 2503 E. Vernon Avenue, Los Angeles, CA 90058-1897
 PH (800) 421-6144 FX 800-587-7301 www.crlaurence.com

Discription:
 CRL STORM FRONT
 HURRICANE RESISTANT
 FIXED WINDOW
 SERIES IW8100
 FOR 1-7/32" GLASS

Drawn By: TMG
 Date: 06/26/15
 Scale: AS NOTED
 File Name:
 IW8100.dwg

Sheet

1.03

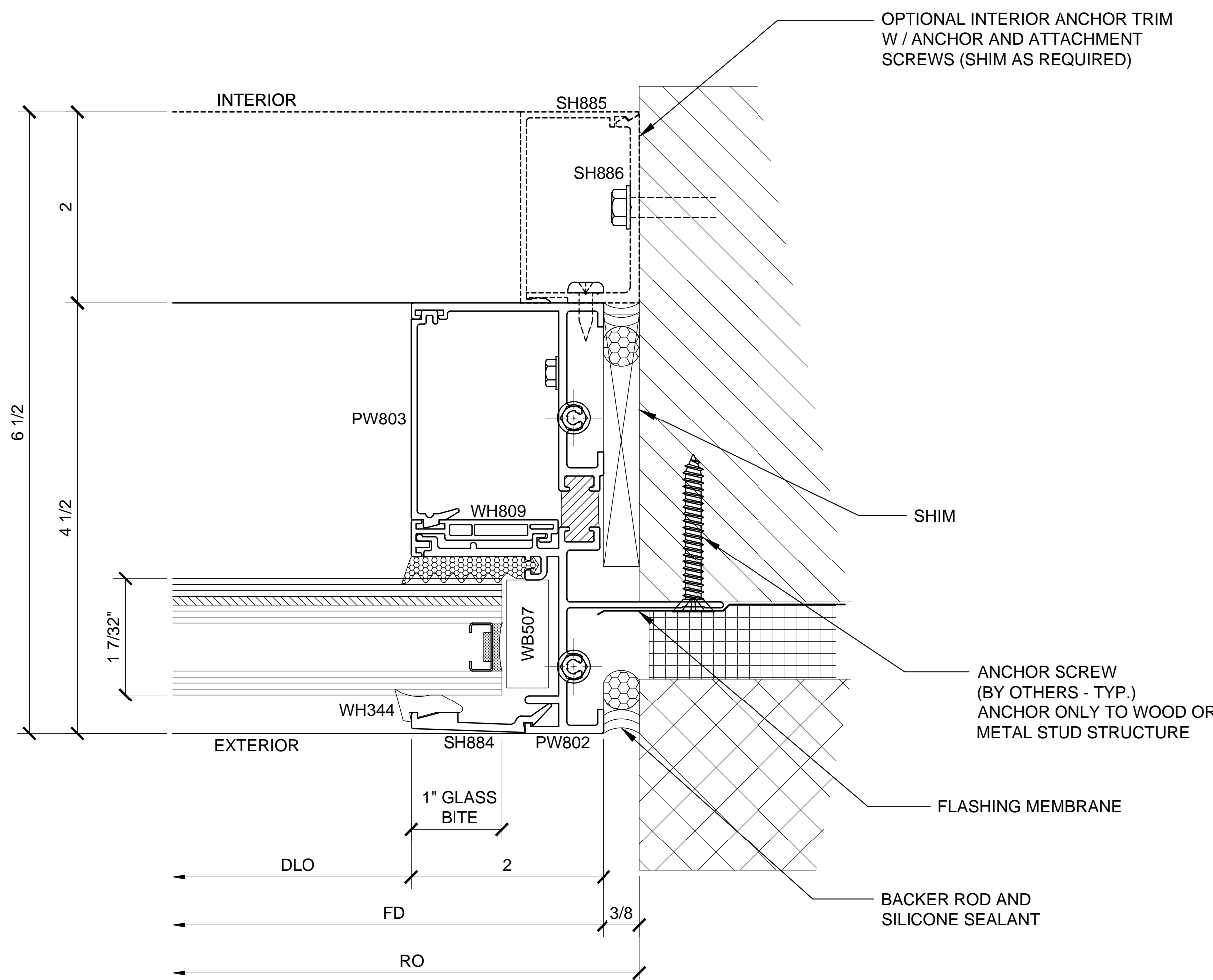


7

SECTION DETAIL AT JAMB

ARCH REF: N/A

1'-0"=1'-0"



8

SECTION DETAIL AT JAMB

ARCH REF: N/A

1'-0"=1'-0"